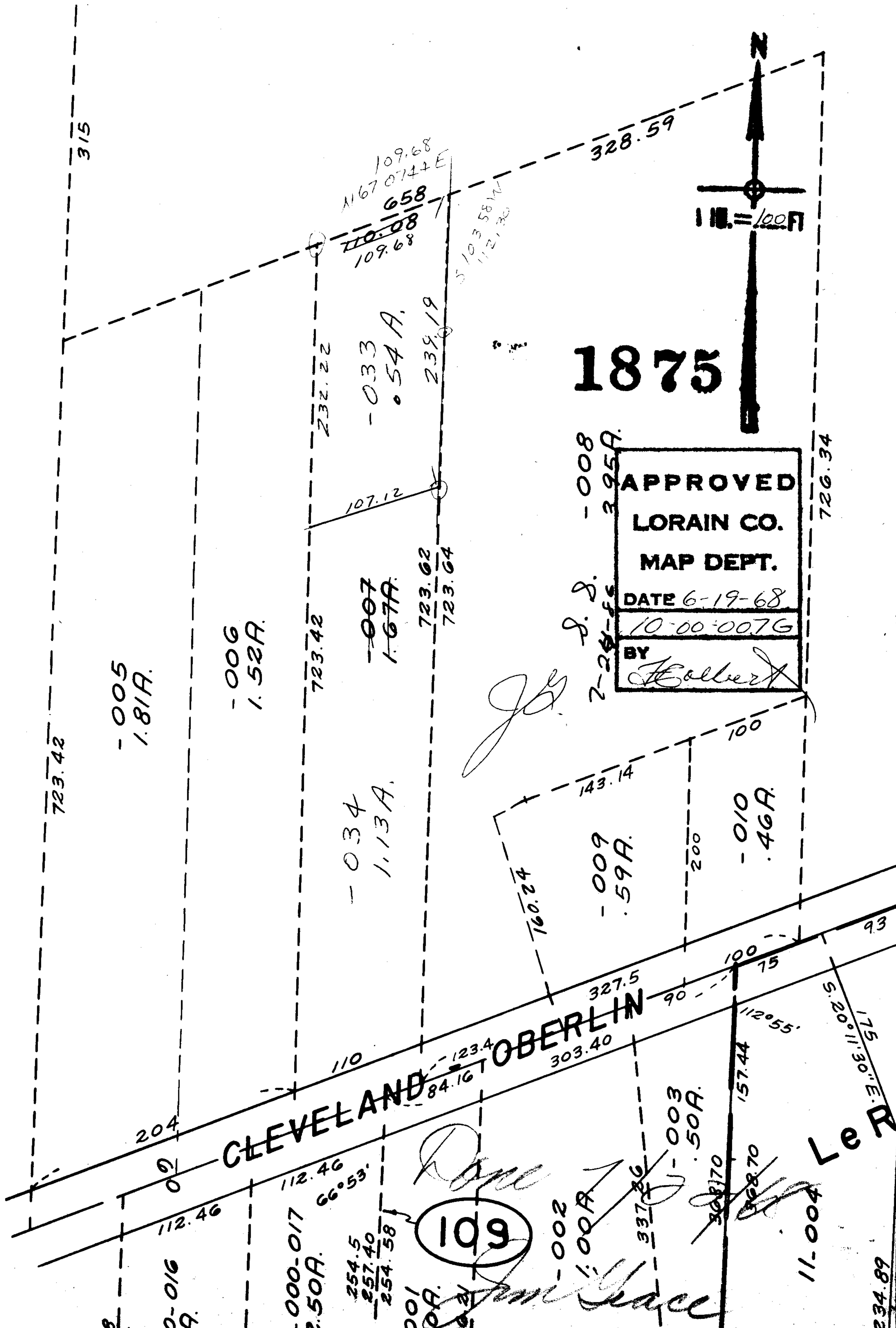


167
54
113



315

1875

APPROVED
LORAIN CO.
MAP DEPT.
DATE 6-19-68
10-00-0076
BY *H. Colbert*

CLEVELAND OBERLIN

109

-005
1.81A.

-006
1.52A.

-034
1.13A.

-007
1.67A.

-009
.59A.

-010
.46A.

-000-017
2.50A.

254.5
257.40
254.58

-002
1.00A.

-003
.50A.

11-004
Le D

234.89

723.42

204

0-016
A.

723.42

110

232.22

107.12

723.62
723.64

001
A.

123.4

84.16

303.40

143.14

160.24

327.5

90

337.26

100

75

157.44

112°55'

175

5°20'11.30"E.

93

726.34

J. S.
2-28-66
-008
3.95A.

109.68
167.0744E
658
110.08
109.68

5103.58M
112.30

328.59

1 in. = 100 ft