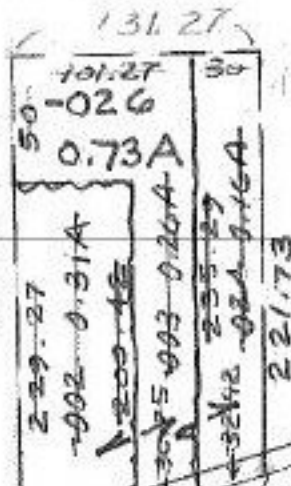


N.L.
 101.27
 30.00
 131.27
 S.L. 70.00
 36.75
 52.92
 133.40
 133.67
 229.27
 58.00
 279.27

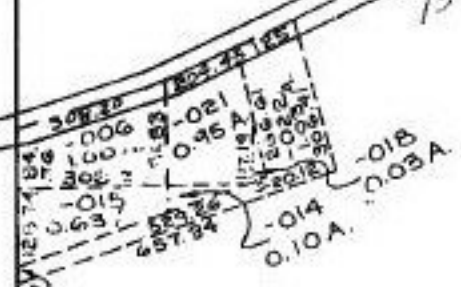
"DETAIL"

002 0.31A
 003 0.26A
 02A 0.16A
 COMB. 0.73A



BECHTEL RD
 # 18622A

131.27
 -025 22.00 A.
 279.27
 003 0.26A
 -024 30.00 A.



-023
 44.87 A.

-001
 23.00 A.

RD. 73
 BECHTEL RD. -010
 16.00 A.

COMBINATION

05.00-0.73-0.00-0.02, 0.03, 0.24

12/15/89
 #18697A
 970.86

APPROVED
 LORAIN CO.
 MAP DEPT.
 DATE 11-13-89
 PAGE 5-H
 BY CAROL FRANKIS
 VOID AFTER # 18697-A

-005
 5.00 A.

752.77 671.43

200 302.46
 -004
 139A
 302.46

AMH.7
 ELYRI

-005
 38A

2481.0

12

-031