

SEE 3-00-097-A

WOOD

30th

30th

31st

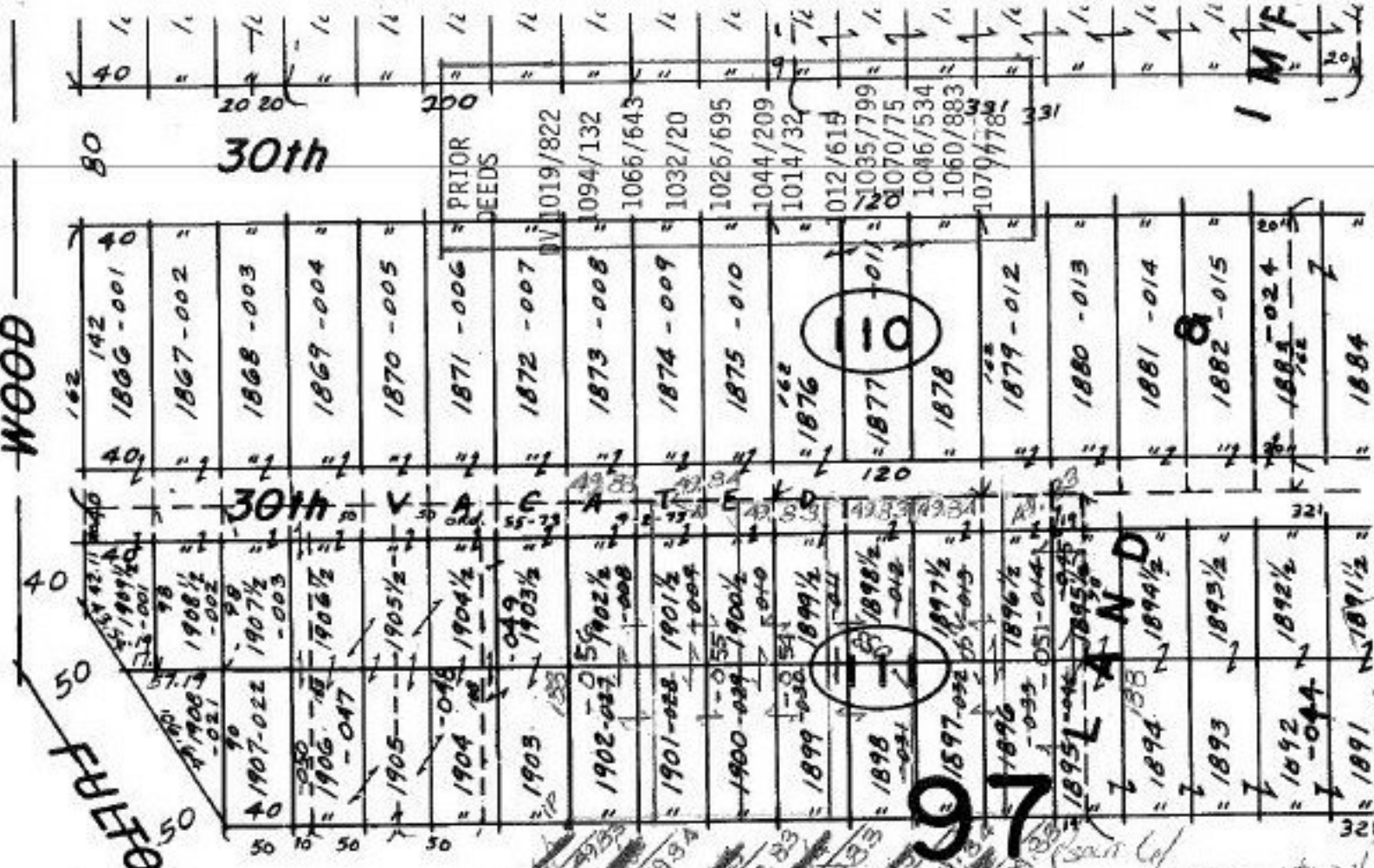
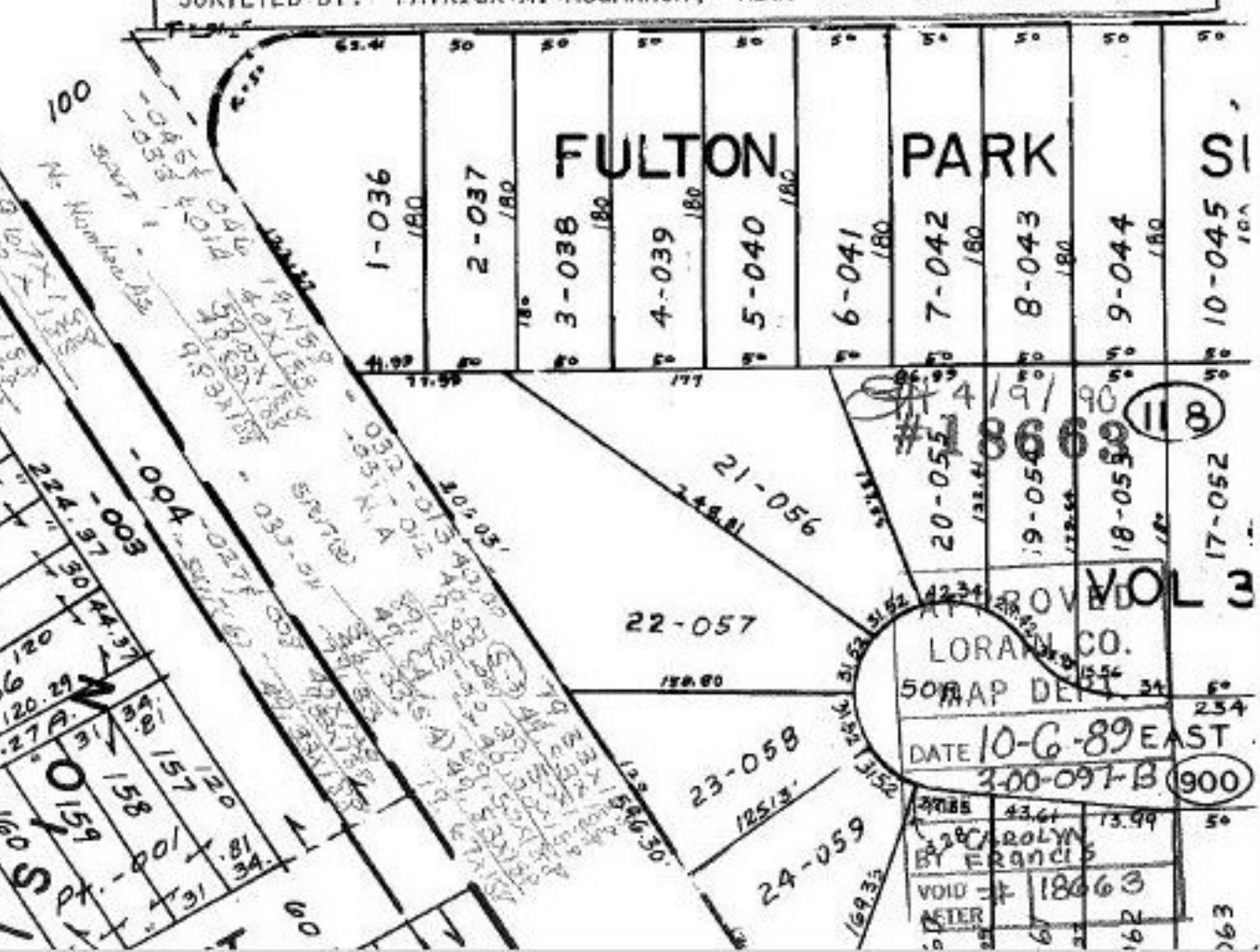
SURVEYED BY: PATRICK A. MCGANNON, REG. SURV. C=1: INF. (1-6)

FULTON PARK

LORAIN CO. MAP DEPT.

DATE 10-6-89 EAST 3-00-097-B (900)

BY ROLYN FRANCIS  
VOID AFTER 18063



1 M/F