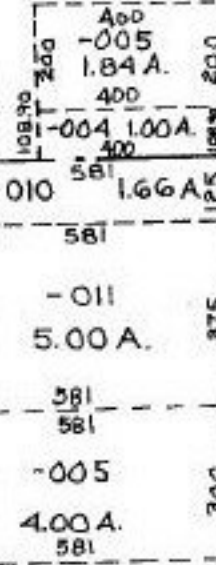


71.68 A.

17-08-028-000- PRIOR INST. 1342/999
SURVEYED BY: KS ASSOC. C=1:1000,000
C=1: INF.

247

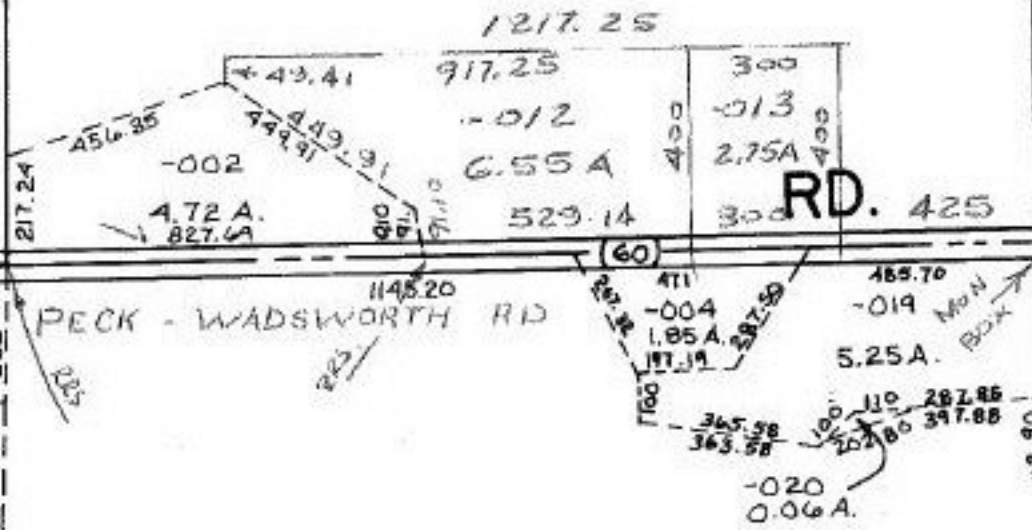
528.21



1008.75
**PECK-
WADSWORTH
ROAD**

28
~~11-014~~
~~-008~~
~~114.62 A.~~
105.32 A

28 114.62
3. 71 6.55
108.07
strip 2.75
105.32



12/22/89
#18662

APPROVED
LORAIN CO.
MAP DEPT.
DATE 10-5-89
PAGE 17-D
BY CAROLYN
FRANCIS
VOID AFTER # 18662

-009 1.00A
-008 1.00A
-005 1.00A
265