

S. LINE
 1581.73
 1307.56
 274.17

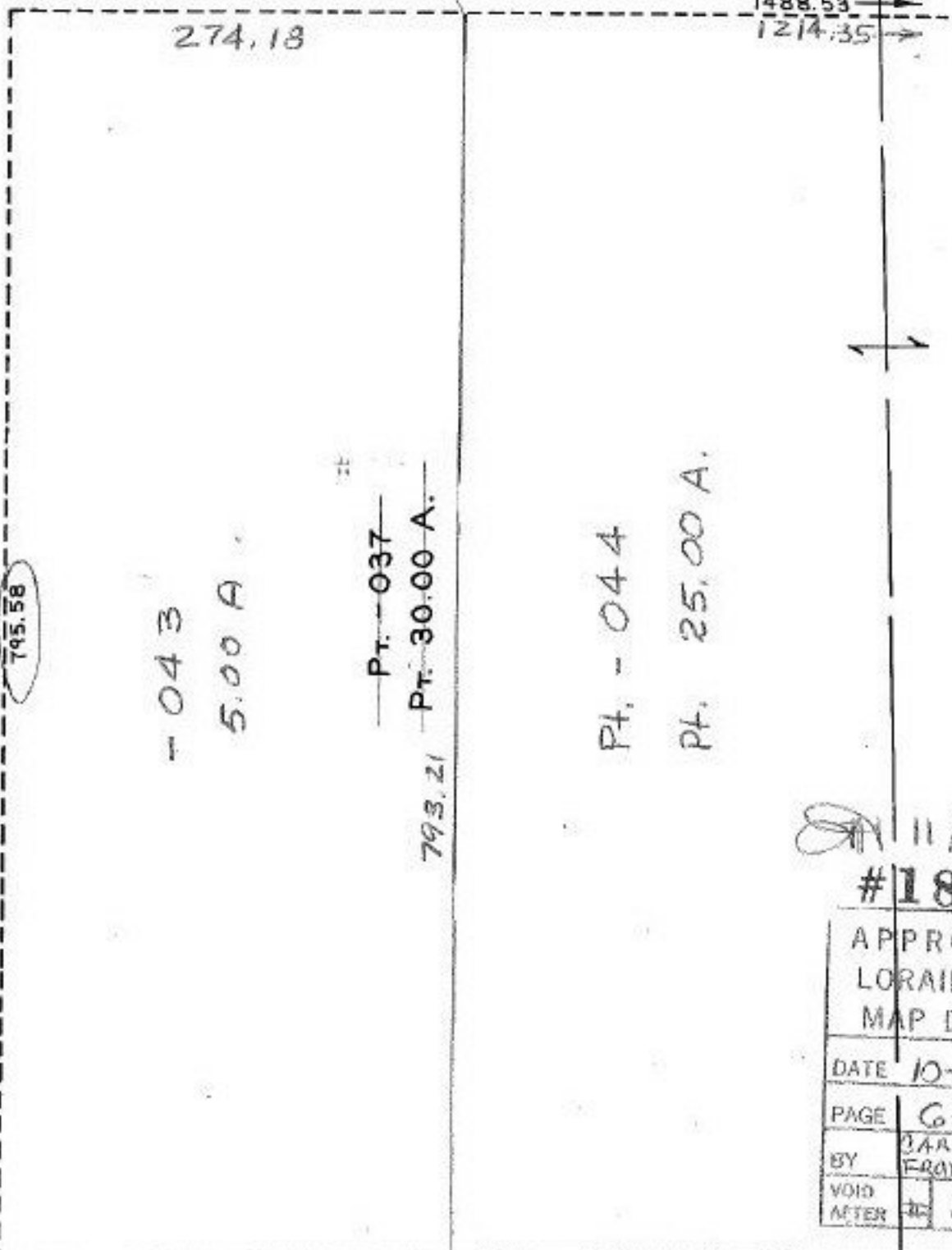
N. LINE
 1488.53
 274.18
 1214.35

Pt. - 036
 Pt. 10.00 A.

06-24-001-000- PRIOR INST. 762/523
 SURVEYED BY: KS ASSOC. 857/400

180
 180
 1055.90
 439.19
 253.61
 50

P
 - 037 30.00
 5.00
 25.00



11/6/89
 #18660

APPROVED	
LORAIN CO.	
MAP DEPT.	
DATE	10-5-89
PAGE	6-127
BY	CAROLYN FRANCIS
VOID AFTER	# 18660

1307.56
 1581.73

RD.