

: 18-00-016-B

987-22

PT. A Breakdown

-055

4.72A

896.38

PT. -040

-056 Pt. - 05B

PT. -13-97A

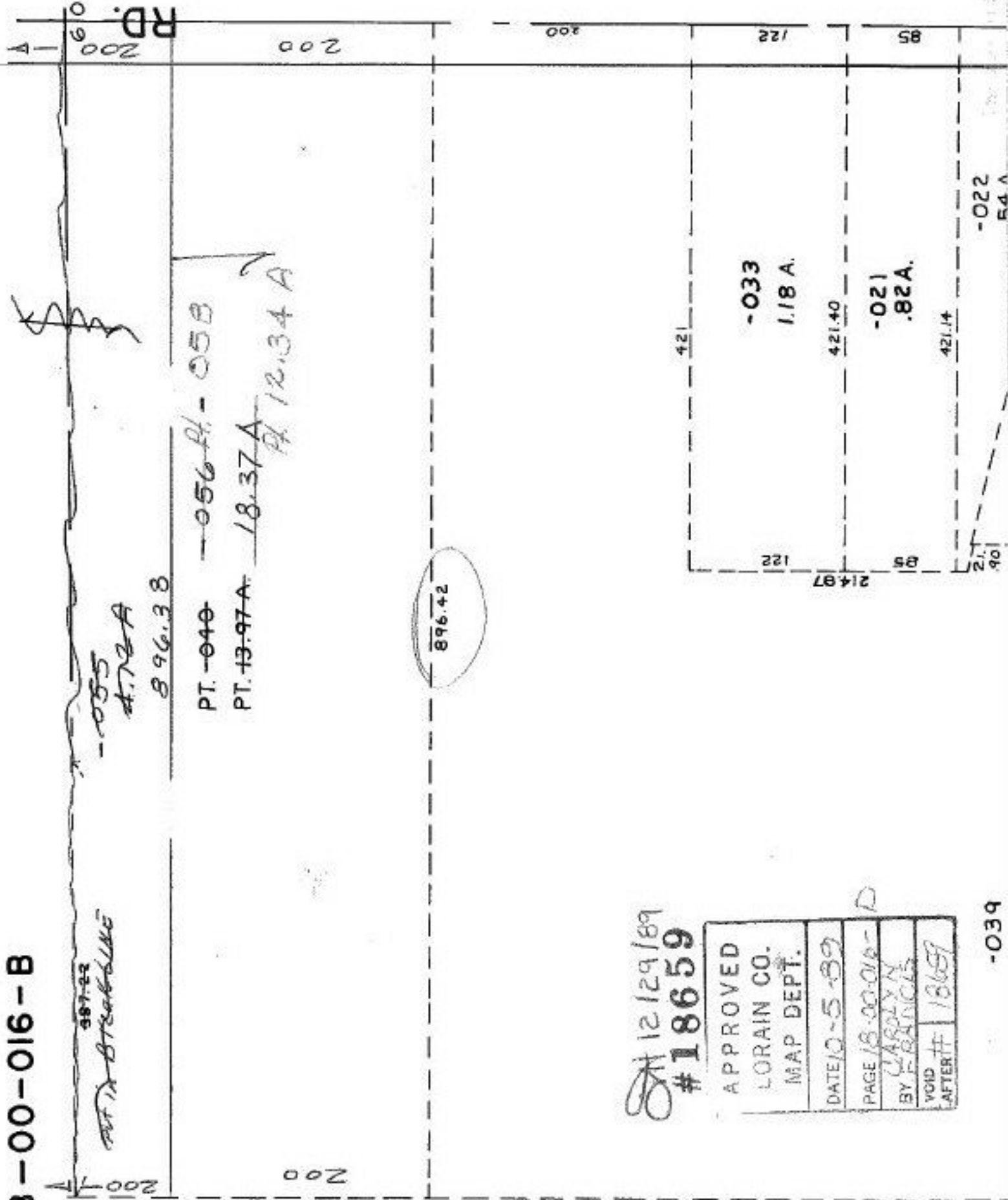
18.37A

Pt. 12.34A

896.42

SA 12/29/89  
#18659

APPROVED
LORAIN CO. MAP DEPT.
DATE 10-5-89
PAGE 18-00-016-D
BY CAROLYN F. BARNICK
VOID AFTER # 18659



-033  
1.18 A.

-021  
.82A.

-022  
54 A

-039