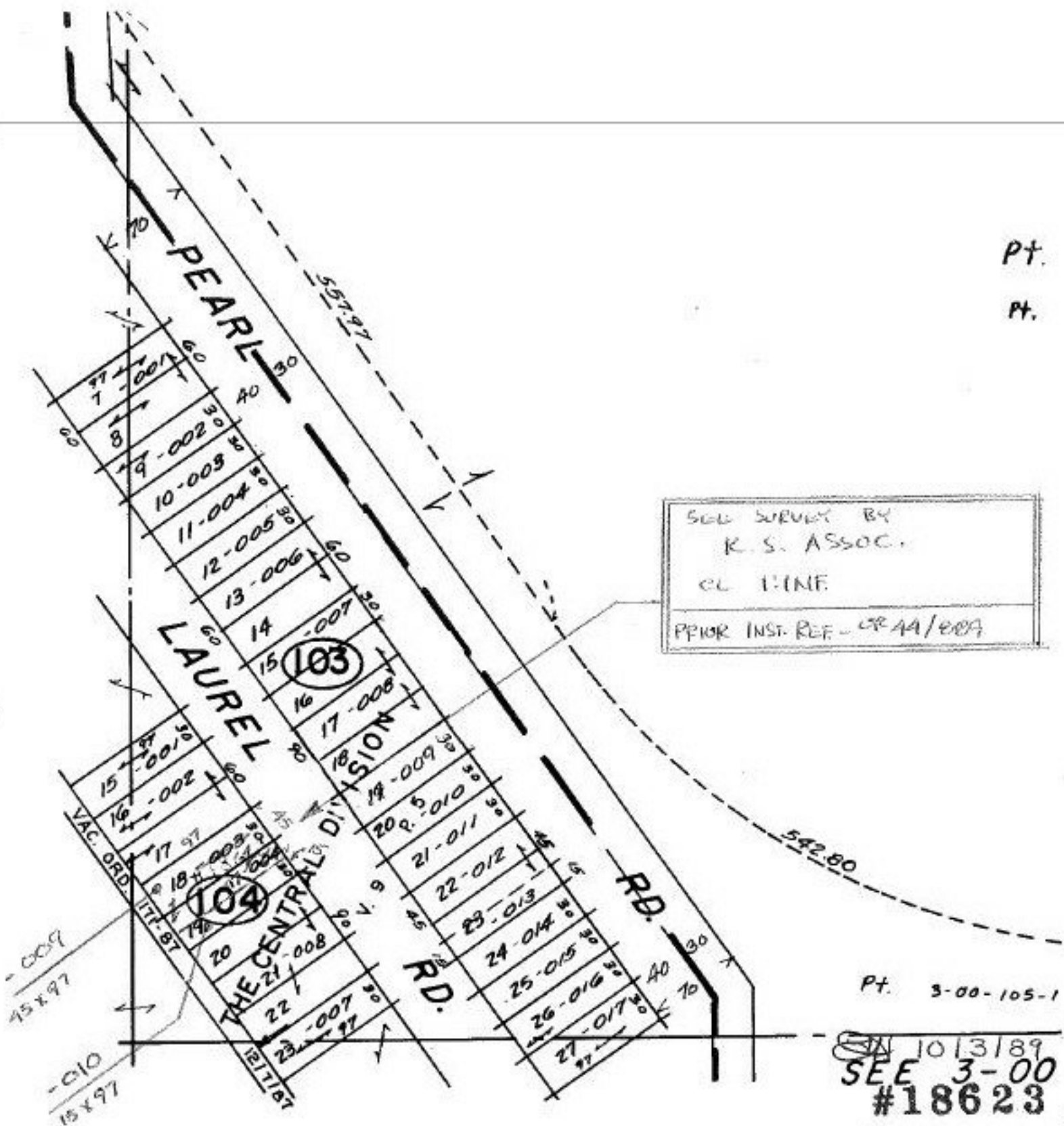


Pt.
Pt.



SEE SURVEY BY
K.S. ASSOC.
CL 1:1 INE
PRIOR INST. REF - CR 44/009

Pt. 3-00-105-1

10/3/89
SEE 3-00
#18623

APPROVED
LORAIN CO.
MAP DEPT.
DATE 7-12-89
PAGE 3-00-105-A
BY T-McNair
VOID AFTER 18623

W. PT. LOT 105