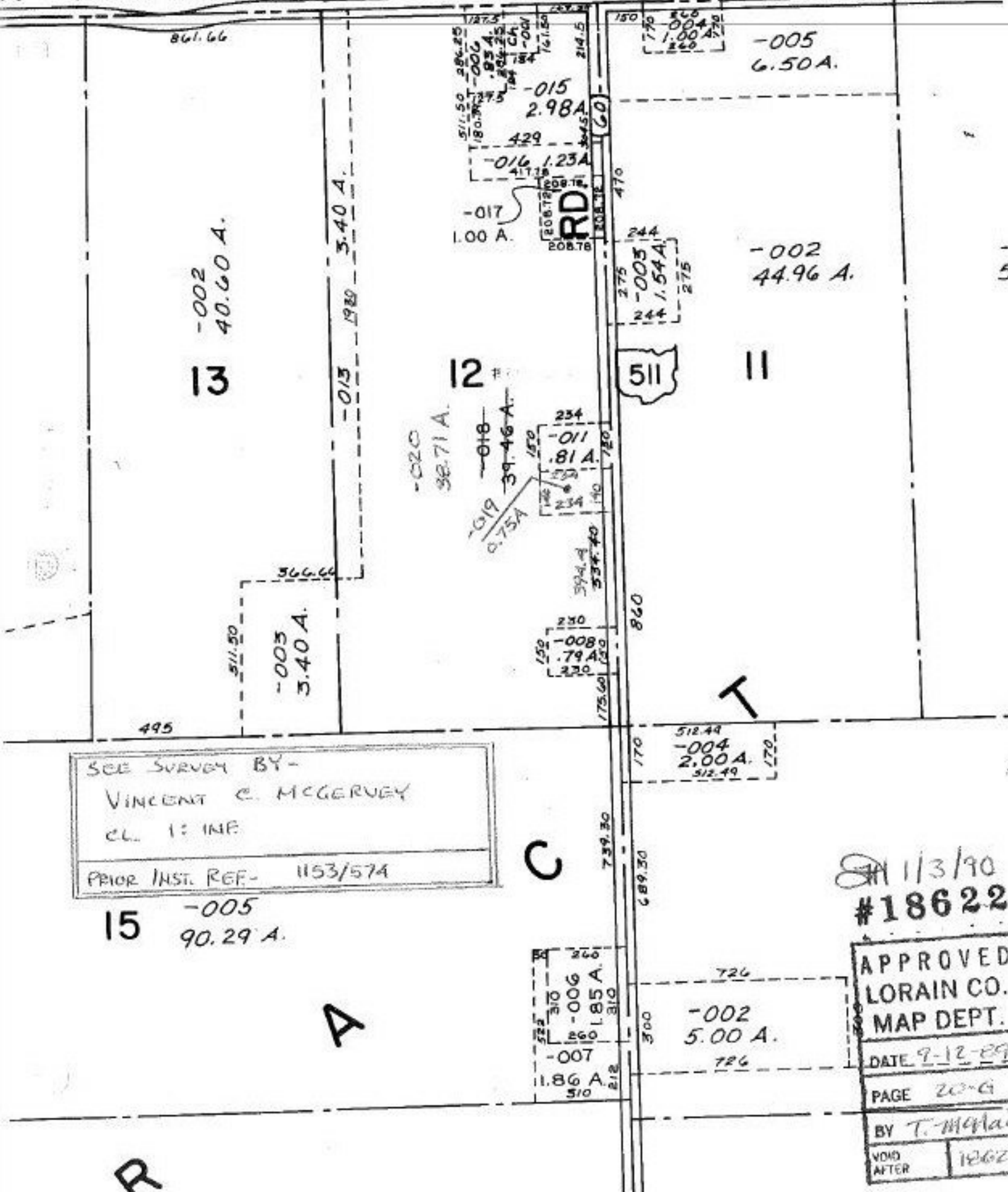


N - LAFAYETTE



SEE SURVEY BY -
 VINCENT C. MCGERVEY
 CL. 1: INF.
 PRIOR INST. REF. - 1153/574

11/3/90
 #18622

APPROVED
 LORAIN CO.
 MAP DEPT.
 DATE 9-12-89
 PAGE 20-G
 BY T. McHain
 VOID AFTER 18622