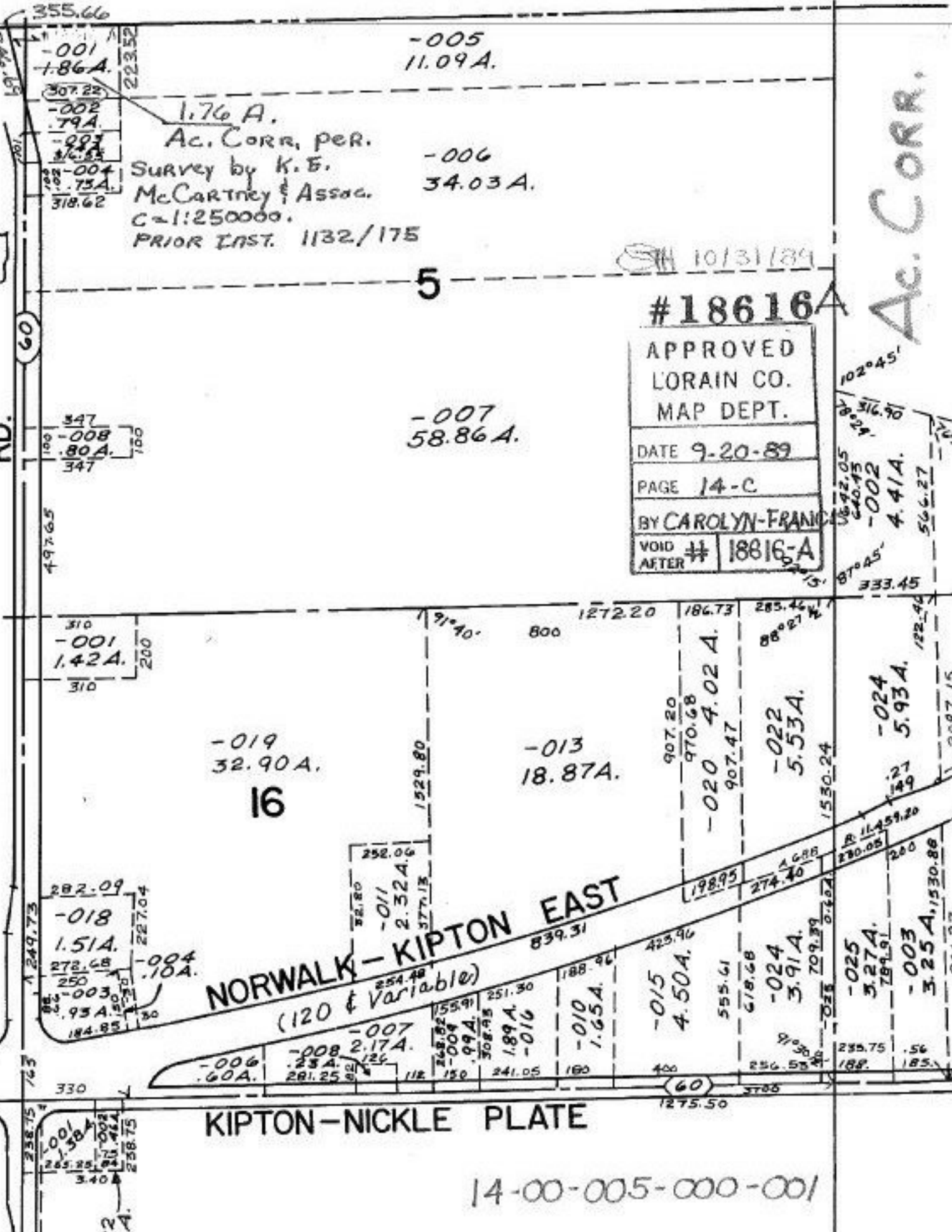


58

RD.

60

20



1.76 A.  
 Ac. CORR. per.  
 Survey by K.F.  
 McCartney & Assoc.  
 C=1:250000.  
 PRIOR INST. 1132/175

10/31/89

#18616A

APPROVED  
 LORAIN CO.  
 MAP DEPT.  
 DATE 9-20-89  
 PAGE 14-C  
 BY CAROLYN-FRANCK  
 VOID AFTER # 18616-A

Ac. CORR.

NORWALK - KIPTON EAST  
 (120 & Variable)

KIPTON - NICKLE PLATE

14-00-005-000-001