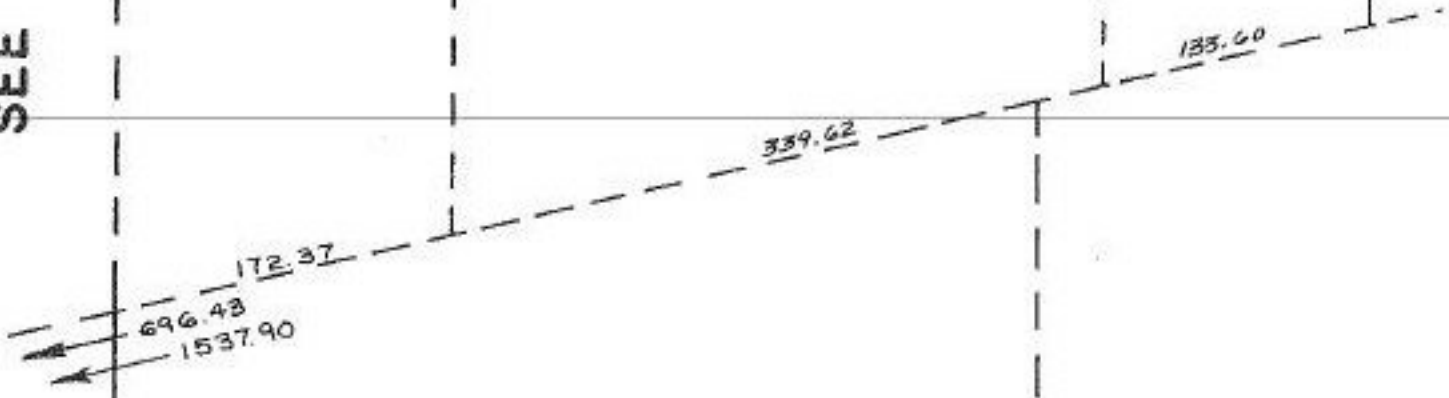
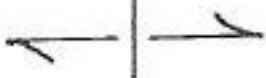


SEE



Pt. -081
 RI. 29.79 A.
~~Pt. -082~~
~~Pt. 31.65 A~~



1196.80

1099.2
1098.

SH 11/6/89
#18590

APPROVED LORAIN CO. MAP DEPT.	
DATE 8-18-89	
PAGE 1100-071-B	
BY T. McInair	
VOID AFTER	18590

828.57

11-00-071-000-042
 9.94 Ac.
 875

11-00-071-B