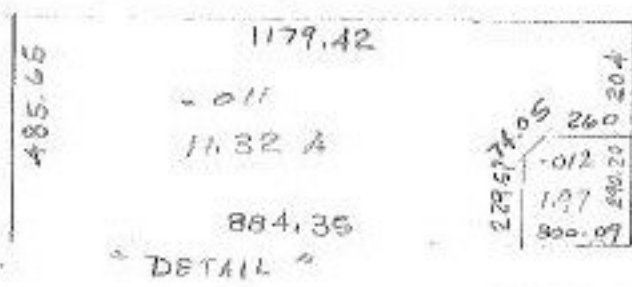


-010 14.02
 SPLIT 11.32
 -2.70
 Survey 1.97 A.

1179.42



WEST LINE
 # 14015
 -010
 14.02 A.

SOUTH LINE
 SURVEY 184.44
 SPLIT 884.35
 SURVEY 300.09 ✓
 EAST LINE
 494.20
 SPLIT 204.00
 SURVEY 290.20 ✓

-011
 11.32 A.



AL. CORR. PER SURVEY -
 D.L. ELWELL - REG. SURVEYOR
 300.09

SA 11/6/89
#18578

PT. -005
 PT. 16.94 A.

11-00-009-104-
 PRIOR INST. 1246/670 K.S. ASSOC.
 SURVEYED BY: DAVID L. ELWELL
 C=1: INF. REG. SURVEYOR
 C=1:333,333. REMAINDER

APPROVED
 LORAIN CO.
 MAP DEPT.
 DATE 9-14-89
 PAGE 11-00-009B
 BY FRANCIS
 VOID AFTER # 18578
 360

HAWKE

586.68

-004
 1.18 A.

11.80 60

SEE 11-00-008-B