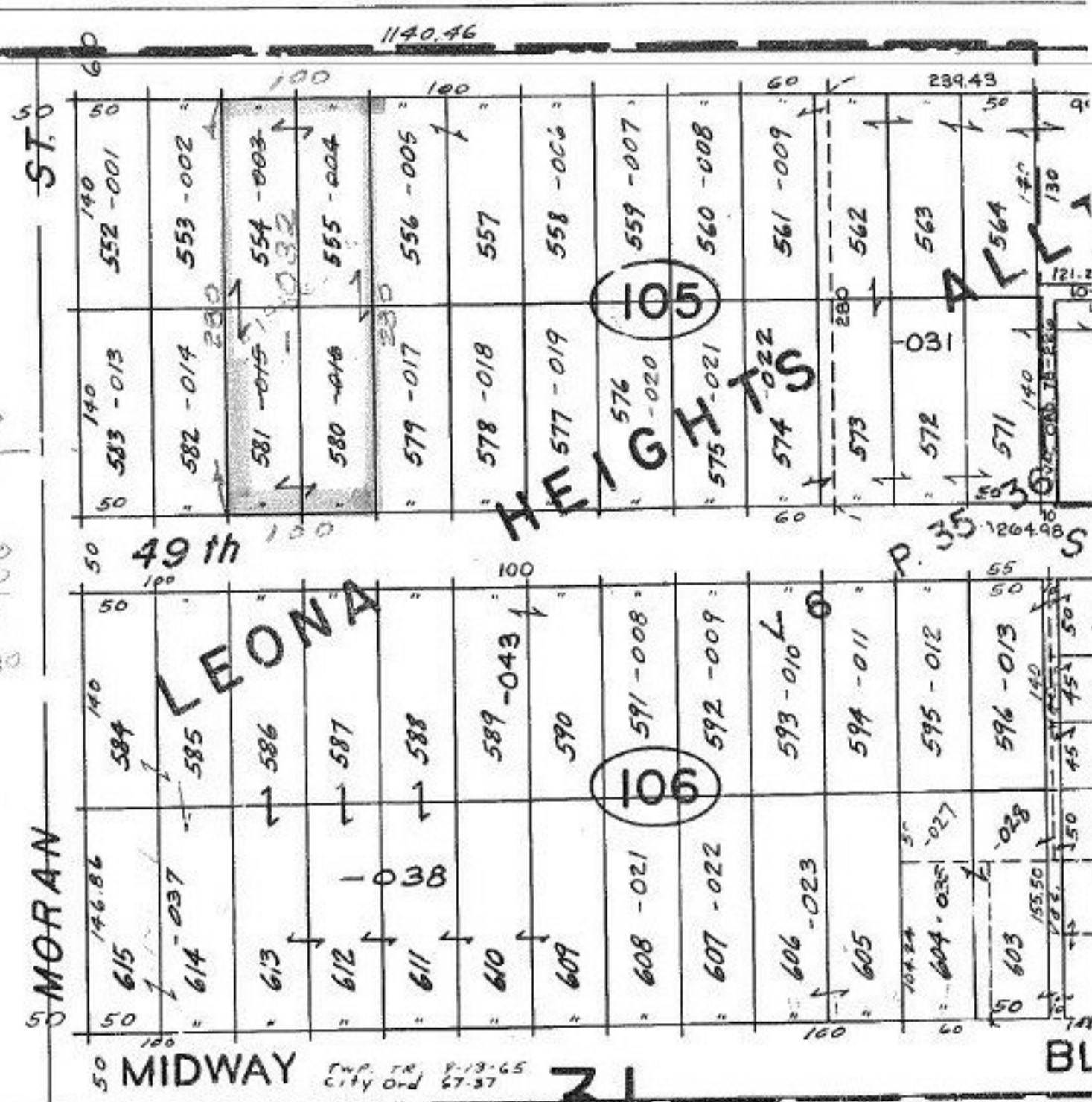


ORD.  
 4 N.L. 50  
 1 S.L. 50  
 100

E/W  
 Line 140  
 140  
 280

100x280



ST. 0

MORAN

MIDWAY

TWP. 18 N. R. 8 E. 13-65  
 City Ord 67-37

31

BL

# COMBINATION

06-24-031-105-003  
 -004  
 -015  
 -016

pt. -005  
 pt. -56A

10/18/84  
 #18562-A

APPROVED LORAIN CO. MAP DEPT.	
DATE 8-29-89	
PAGE 6-47	
BY CAROLYN FRANCIS	
VOID AFTER	# 18562-A