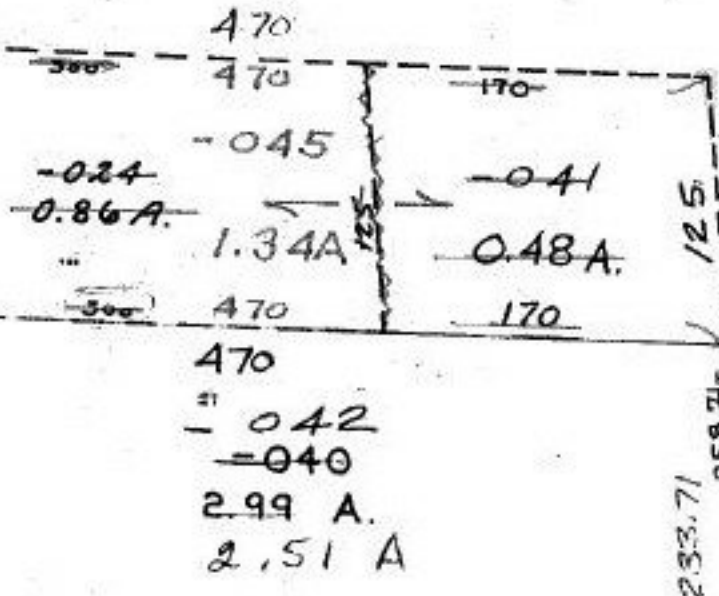


- 024 0.86
 - 041 0.48
 1.34 A

900

T.S.	T.M.	N. LINE	EAST. LINE
-040 2.926	2.99	300.00	358.71
0.48	0.48	170.00	125.00
<u>2.51</u>	0.51	470.00	233.71

- 045



COMBINATION

470.00
 06-24-001-000-024
 -041

-033
 1.66 A.

470.00

-035
 2.86 A.

-005
 1.00 A.

SURVEYED BY - K.S. Assoc.	CL. 1: INF.
PRIOR DEED - 228/9631 1376/02B	

11/6/89-039

#18550A

APPROVED
 LORAIN CO.
 MAP DEPT.

DATE 10-24-89

PAGE 6-128

BY CAROLYN
 FRANCIS

VOID AFTER 18550A

#18505

APPROVED
 LORAIN CO.
 MAP DEPT.

DATE 6-28-89

PAGE 6-128

BY Carolyn Francis

VOID AFTER #18505

876.60 TO HWY.
 AT CL A SUT INT.

FROM TOP WEST LINE RD
 AT A NW CORNER
 TWP. ALB. RECHT.

WEST RIDGE
 150

198.98

125

233.71

155.00

150

233.17

208

208

233.17

233.71

155.00

383.17

CITY OF ELVIRA
 2900 S. KING ST
 ELVIRA, N.M. 87810