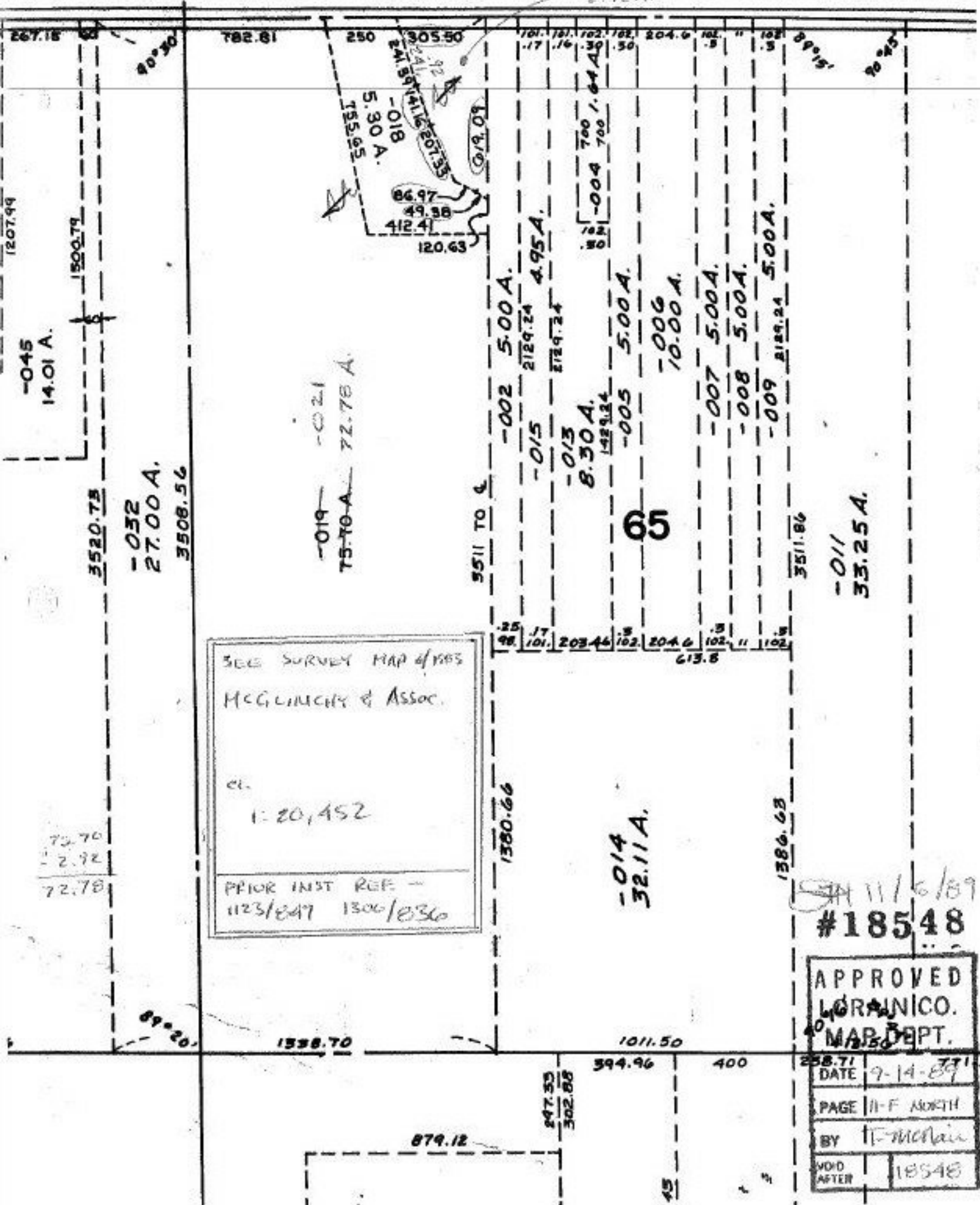


-020  
2.92 A.

2



-045  
14.01 A.

-032  
27.00 A.  
3520.73  
3508.56

-019 -021  
75.70 A. 72.78 A.

5511 TO 6  
-002 5.00 A.  
-015 2129.24 4.95 A.  
-013 2129.24

8.30 A.  
-005 5.00 A.  
-006 10.00 A.

-007 5.00 A.  
-008 5.00 A.  
-009 2129.24 5.00 A.

-011  
33.25 A.

SEE SURVEY MAP of 1983  
MCGILMURCHY & ASSOC.  
CL.  
1:20,452  
PRIOR INST REF. -  
1123/847 1306/836

-014  
32.11 A.

11/6/89  
#18548

APPROVED
LORANICO.
MAP DEPT.
DATE 9-14-89
PAGE 11-F NORTH
BY T-McNair
VOID AFTER 18548

1338.70

1011.50

258.71 DATE 9-14-89

PAGE 11-F NORTH

BY T-McNair

VOID AFTER 18548

879.12

297.33  
302.88

394.96

400

97.45