

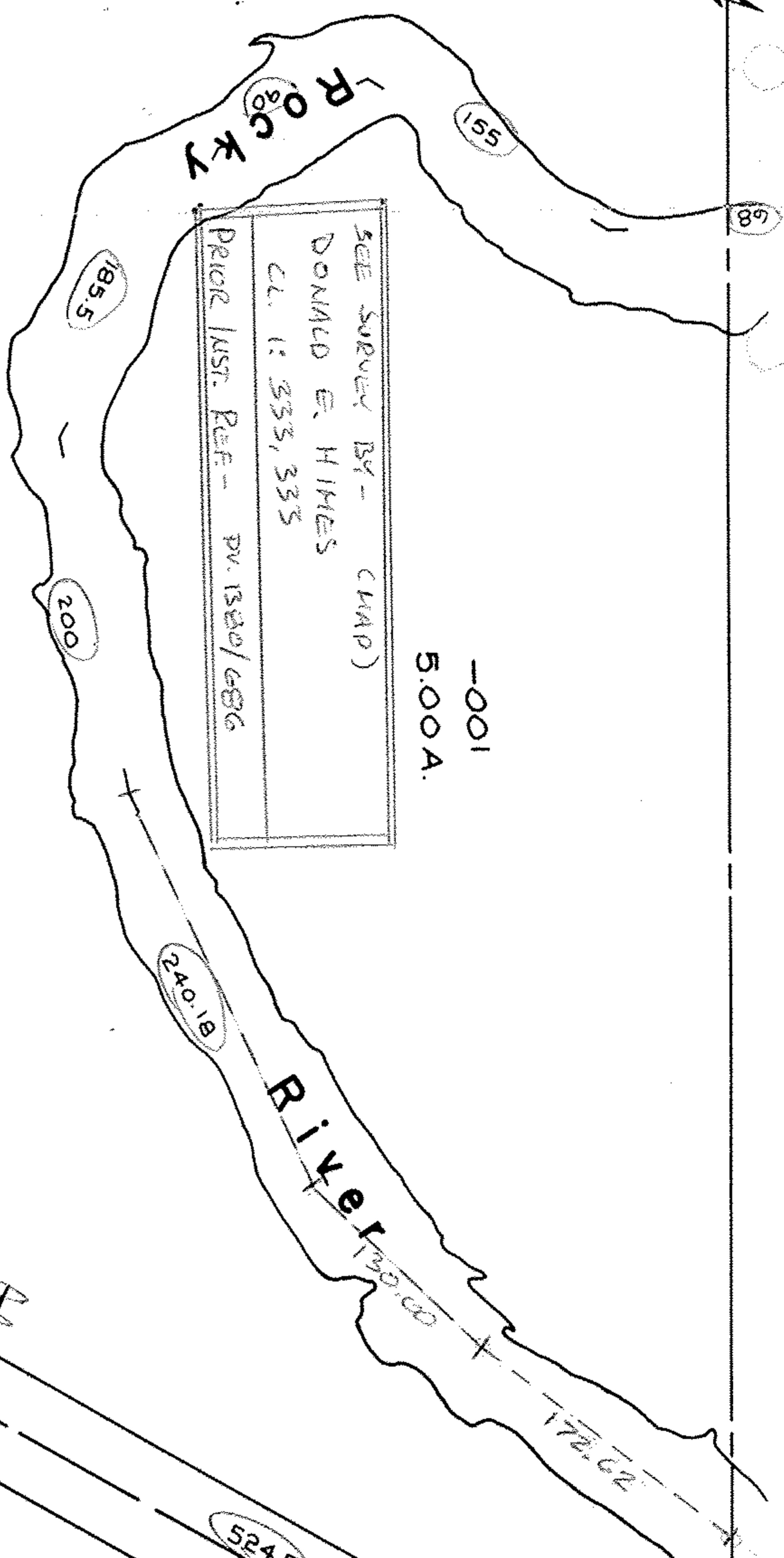
OL 37

OL 45

1453.30
1434.04 D.

-001
5.00 A.

SEE SURVEY BY - (MAP)
DONALD E. HIMES
C.L. 1: 333, 335
PRIOR INST. REF - DV. 1520/686



~~Pt. -038~~
~~Pt. 38.97 A.~~

Pt. -039
Pt. 9.24 A.

1192.61

$$\begin{array}{r} 38.97 \\ -9.24 \\ \hline 29.73 \end{array}$$

1192.61
1180.55

Pt. -035
Pt. 4.09 A.

Pt. -037
Pt. 5.73 A.

792.28

514.30

317.08

500

~~Pt. -038~~
~~Pt. 38.97 A.~~

-040

Pt. 29.73 A
#18540
10/26/89

#18540

APPROVED
LORAIN CO.
MAP DEPT.
DATE 7-21-89
PAGE 12-00-036-A
BY T. M. W. 1836.5
VOID AFTER 18540

-015