

500

1.79 A.

676.54

475.06

113

-005
7.98 A.

SEE SURVEY "MAP" BY
JOHN R. HAMILTON

CL. @	1:	50,000
CL. @	1:	333,333

PRIOR INST. REF - 1294/370

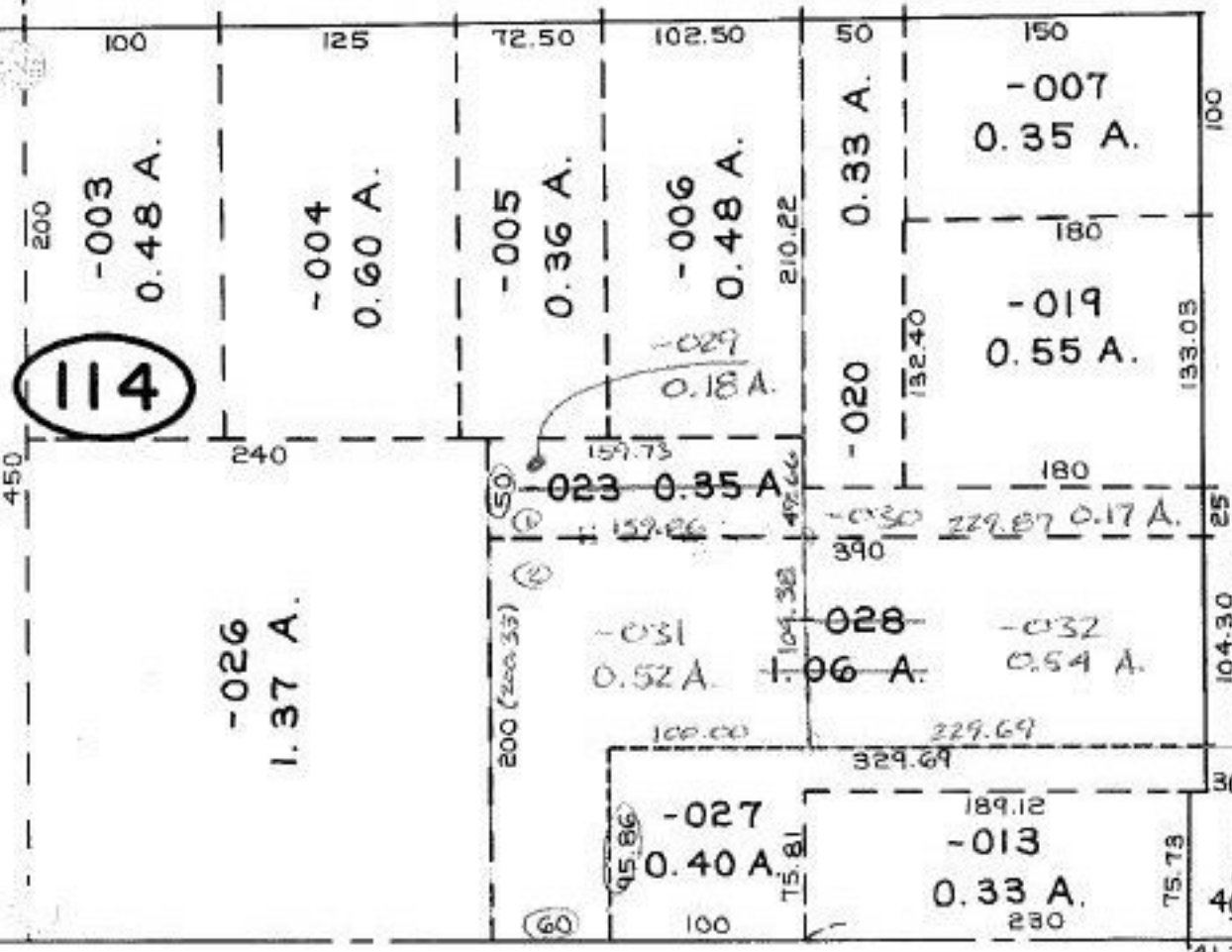
630

-003
1.38 A.

ST. 100

611

104.30
95.70
200.00



10/3/89
#18539

APPROVED
LORAIN CO.
MAP DEPT.

DATE 7-21-89

PAGE 2-02-023-B

BY T. McNamee

VOID AFTER 18539

E 2-02-018-B

MON.