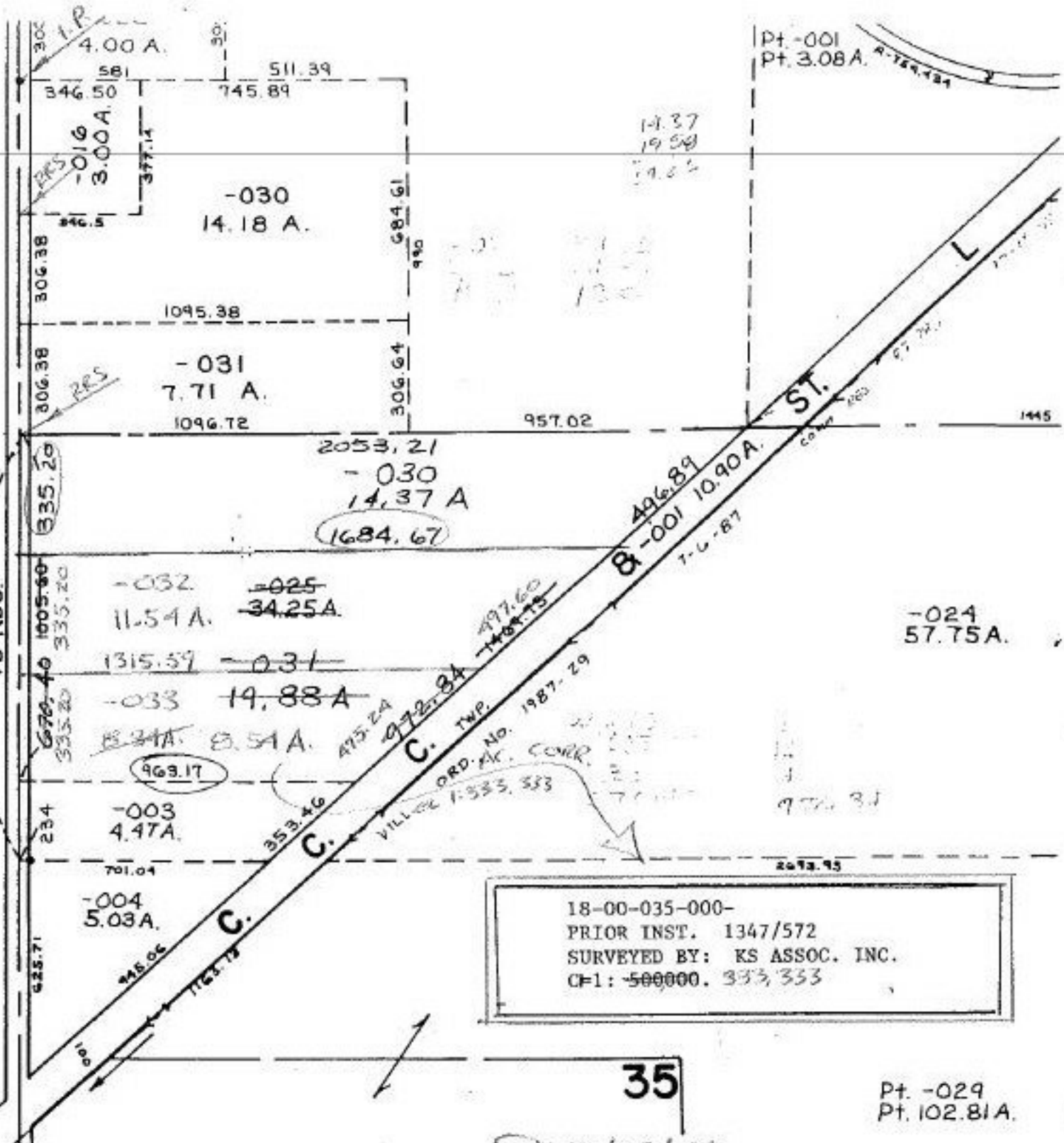


Pt. -001  
Pt. 3.08A  
A-154.434



SEE 18-E

75 RDS.

335.20

636.40  
1005.60  
335.20

234

625.71

-032  
11.54A.

-033  
14.88A

-003  
4.47A.

-004  
5.03A.

-025  
34.25A.

-031  
14.88A

8.51A.

969.17

415.06

1123.19

353.46

495.24

972.84

497.60

1487.75

ORD. No. 1987-29

VILLAGE 1-333, 333

2053.21  
-030  
14.37 A  
1684.67

C. TWP.  
ORD. No. 1987-29  
VILLAGE 1-333, 333

18-00-035-000-  
PRIOR INST. 1347/572  
SURVEYED BY: KS ASSOC. INC.  
CP1: 500000. 333, 333

35

Pt. -029  
Pt. 102.81A.

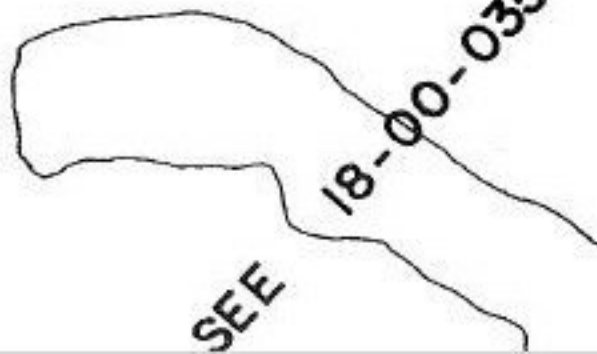
12/29/89

#18524

#18478

APPROVED	
LORAIN CO.	
MAP DEPT.	
DATE	7-12-89
PAGE	18-F
BY	T. McVain
VOID AFTER	18524

APPROVED	
LORAIN CO.	
MAP DEPT.	
DATE	12/29/89
PAGE	18-F
BY	Carroll
VOID AFTER	#10A



SEE 18-00-035-C

TTS