

4

4

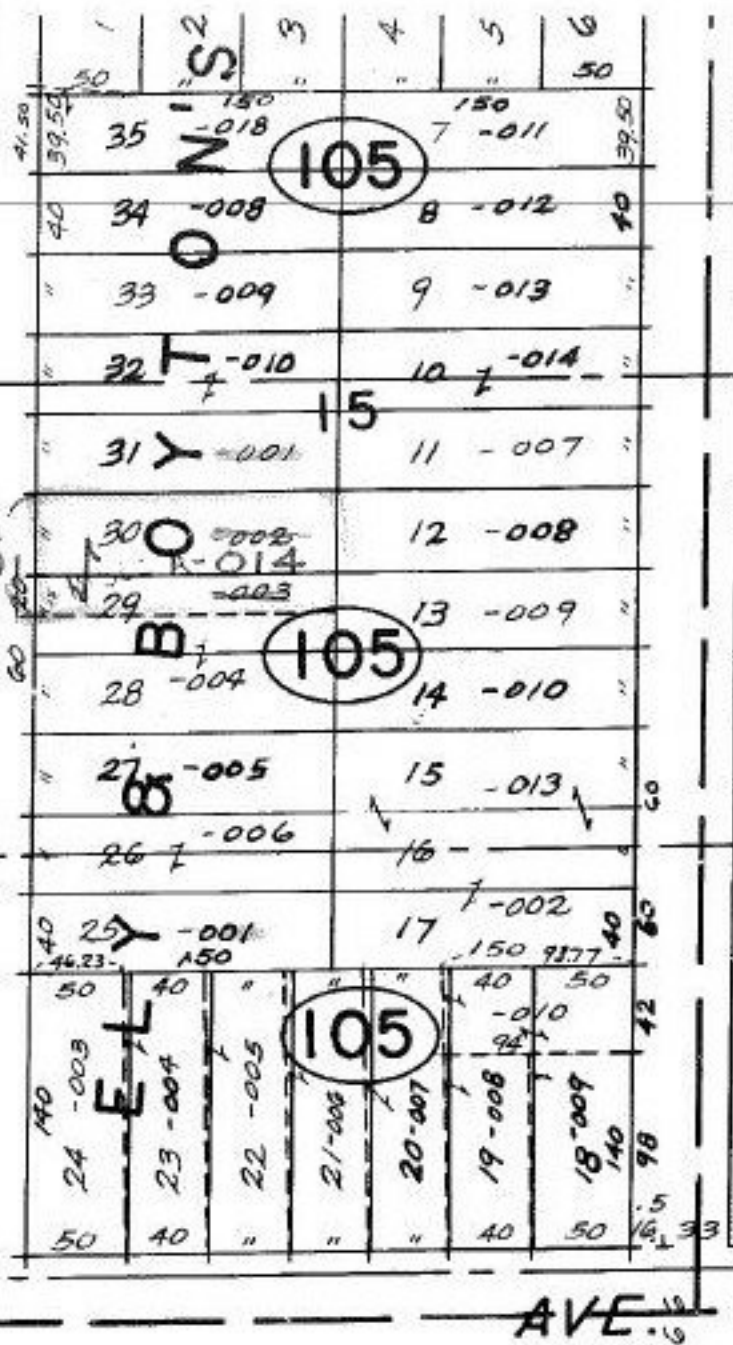
01

60X150
60X150

700

150

91°32'1/2"



COMBINATION

O.G. - 24-068-105-002-003

MADISON 66

37-033	64-018
35-034	65-019
33-035	66-020
40	67-001

31-019	67-001	41.60
30-010	68-002	41.60
29-011	69-003	44.6
28-012	70-004	38.6
27-013	71-005	
26-014	72-006	
25-015	73-007	
24-016	74-008	41.60
40	75-009	41.60

50 AVE.

11-000	
12-009	
13-010	
14-011	
15-012	
16-013	
17-014	
18-015	
19-016	
20-017	
21-018	
22-019	
23-020	
40	
50	

66

65

11/6/89

#18523A

APPROVED
LORAIN CO.
MAP DEPT.

DATE 10-25-89

PAGE 6-81
CAROLYN
BY FRANCIS

VOID AFTER # 18523A