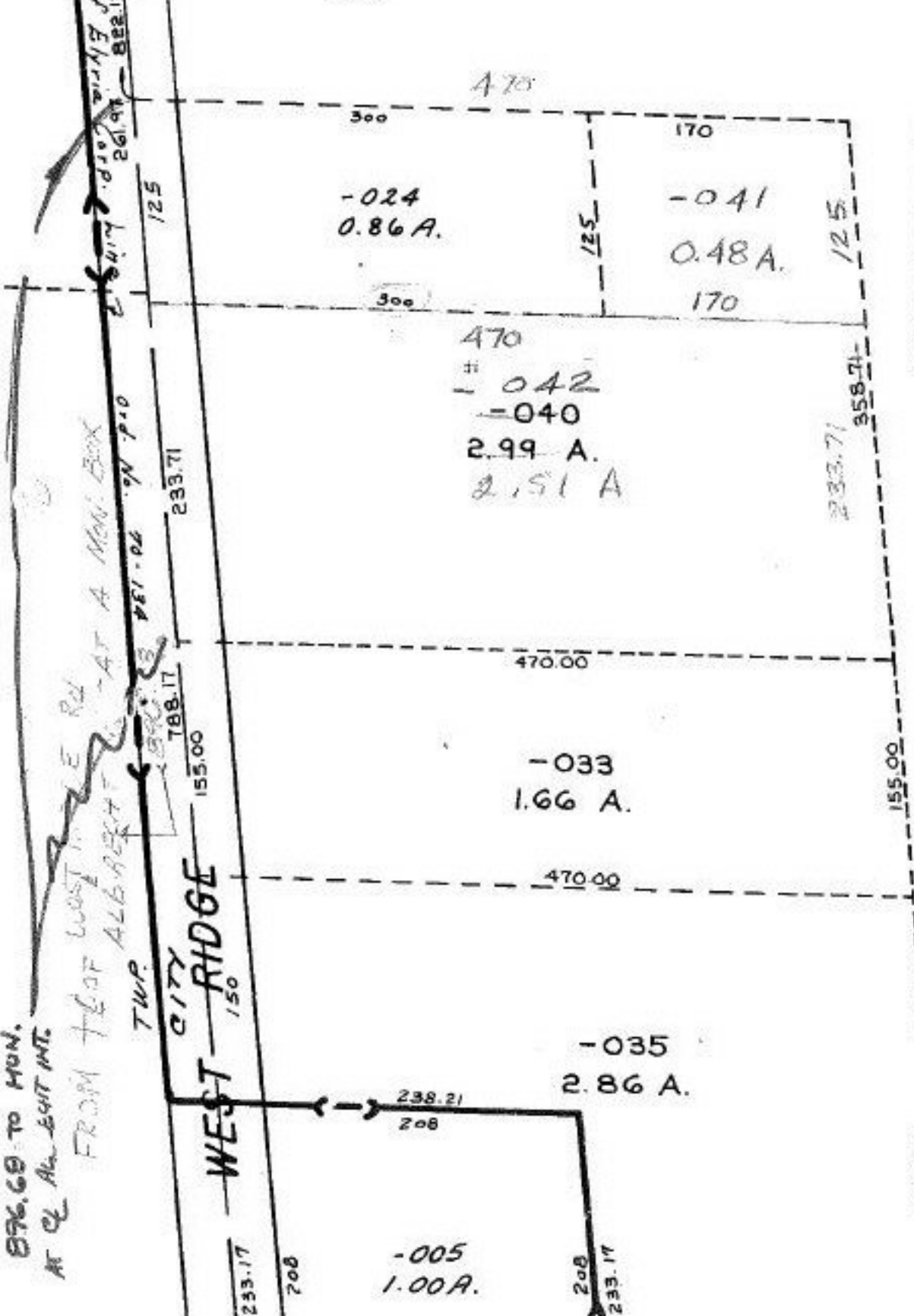


876.69 TO MUN.  
AT CL. AL. 44 FT INT.

FROM TWP WEST RIDGE RD  
AT ALBERTA - AT A MON. BOX

TWP. CITY RIDGE  
WEST 150

T.S.	T.M.	N. LINE	EAST. LINE
-040	2.99	300.00	358.71
2.00	0.48	170.00	125.00
1.51	0.51	470.00	233.71
2.51			



SURVEYED BY -  
K.S. ASSOC.  
CL. 1: INF  
PRIOR PEEP -  
1896 / 828

-039  
12.92 A

JUN 10/18/89  
#18505

APPROVED  
LORAIN CO.  
MAP DEPT.  
DATE 6-28-89  
PAGE 6-128  
BY Carolyn Francis  
VOID AFTER # 18505