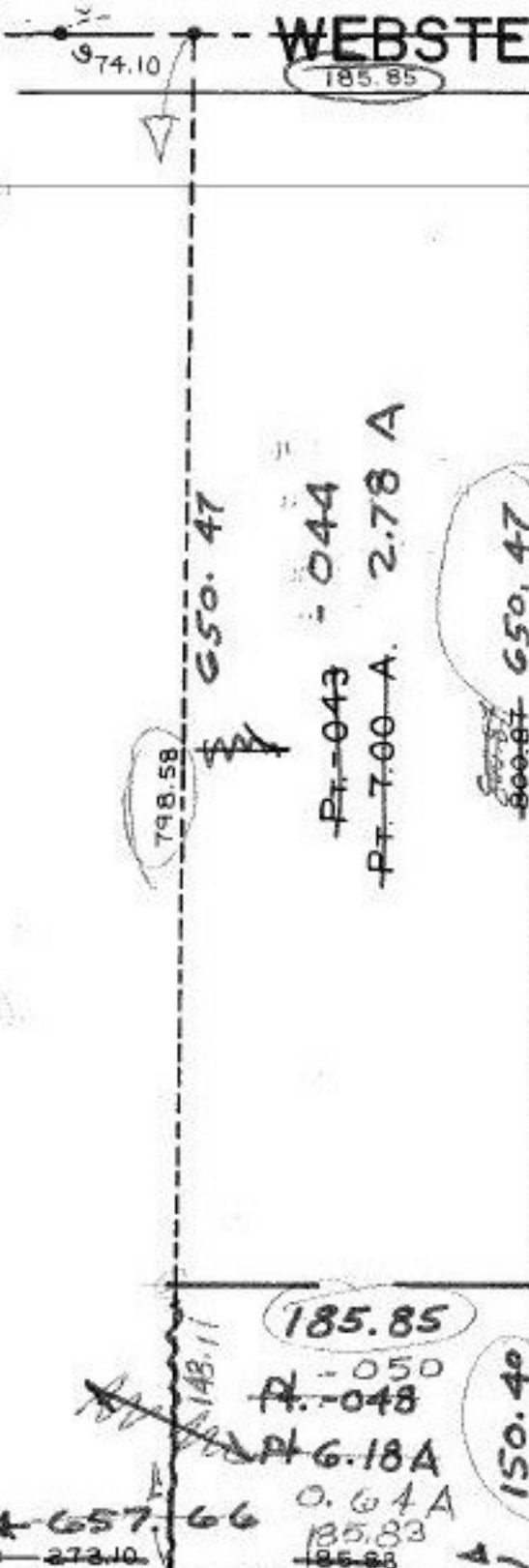


# WEBSTER

105	"	"	"	105
10-013	9-014	8-015	7-016	6-017
105	"	"	"	105

NIMROD SQU

V. 23



EAST LINE  $650.47$   
 $150.40$   


---

 $800.87$

WEST LINE  $650.47$   
 $148.11$   


---

 $798.58$

PT. 043 - 044  
 PT. 7.00 A. 2.78 A

PT. 050  
 PT. 048  
 PT. 6.18 A  
 0.64 A  
 185.83  
 185.85

Rem: 5.64 - 048  
 (2) Inp 0.64  
 Rem: 5.00

11/3/90 1124.11

#18502

APPROVED  
 LORAIN CO.  
 MAP DEPT.

DATE 6-27-89

PAGE 19-06-118B

BY Carolyn Frances

VOID AFTER # 18502

06-118-A