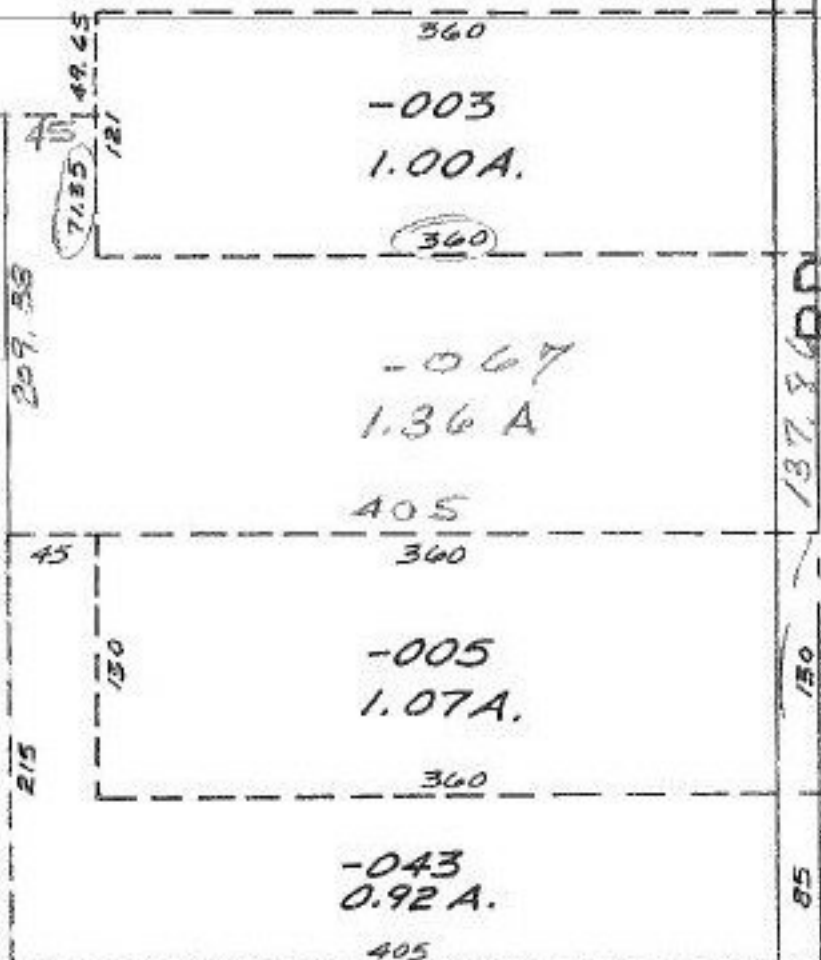


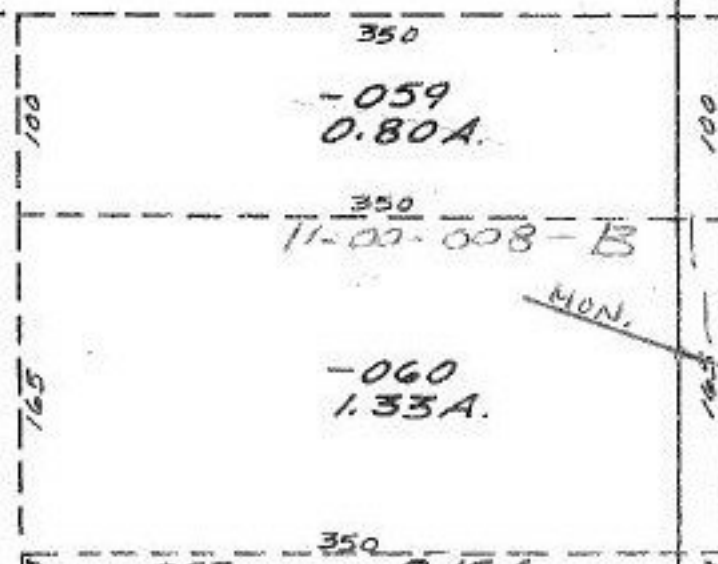
-010  
1.64A.

586.69  
541.69  
- 044  
37.68A  
1.36A  
Rem 3632A  
N.L. 586.69  
- 45.00  
541.69



Pt. -044 - 068  
Pt. 37.68A.  
Pt. 36.32A

11-00-008-000-  
PRIOR INST. 905/958  
SURVEYED BY: WILLIAM B. BARTON  
C=1:166666 REG. SURVEYOR



11/6/89  
#18495

APPROVED  
LORAIN CO.  
MAP DEPT.  
DATE 6-22-89  
PAGE 11-00-008-B  
B. Francis  
VOID AFTER #18495

OSBORNE  
RD.