

NORTH LINE
512.46
-116

15.75 A

459.86

~~-092~~
~~30.26 A~~

-117
14.51 A

512.46
1265
-116
459.86
15.75 A
1802.19

102

556.96

04-00-004-102-
PRIOR INST. 1347/463
SURVEYED BY: ROBERT D. MARTINI
C-L 1666666 REG. SURVEYOR

SEE 4-00-004-F
Albert A. Bessie Genaso
D.H. 31V G 23
0.93 Feet From
Mon Box ST. 210 + 22.41
ST. RT. 611 F +
w/ence of
870.45
2856.70
587.53 From

1802.19 - AN

OVERALL
DISTANCE 2856.70
FROM PLACE - 1587.53
OF BEGINNING 1869.17
BEFORE SURVY 1265.00

-092 30.26
PAID 15.75
REIM. 14.51

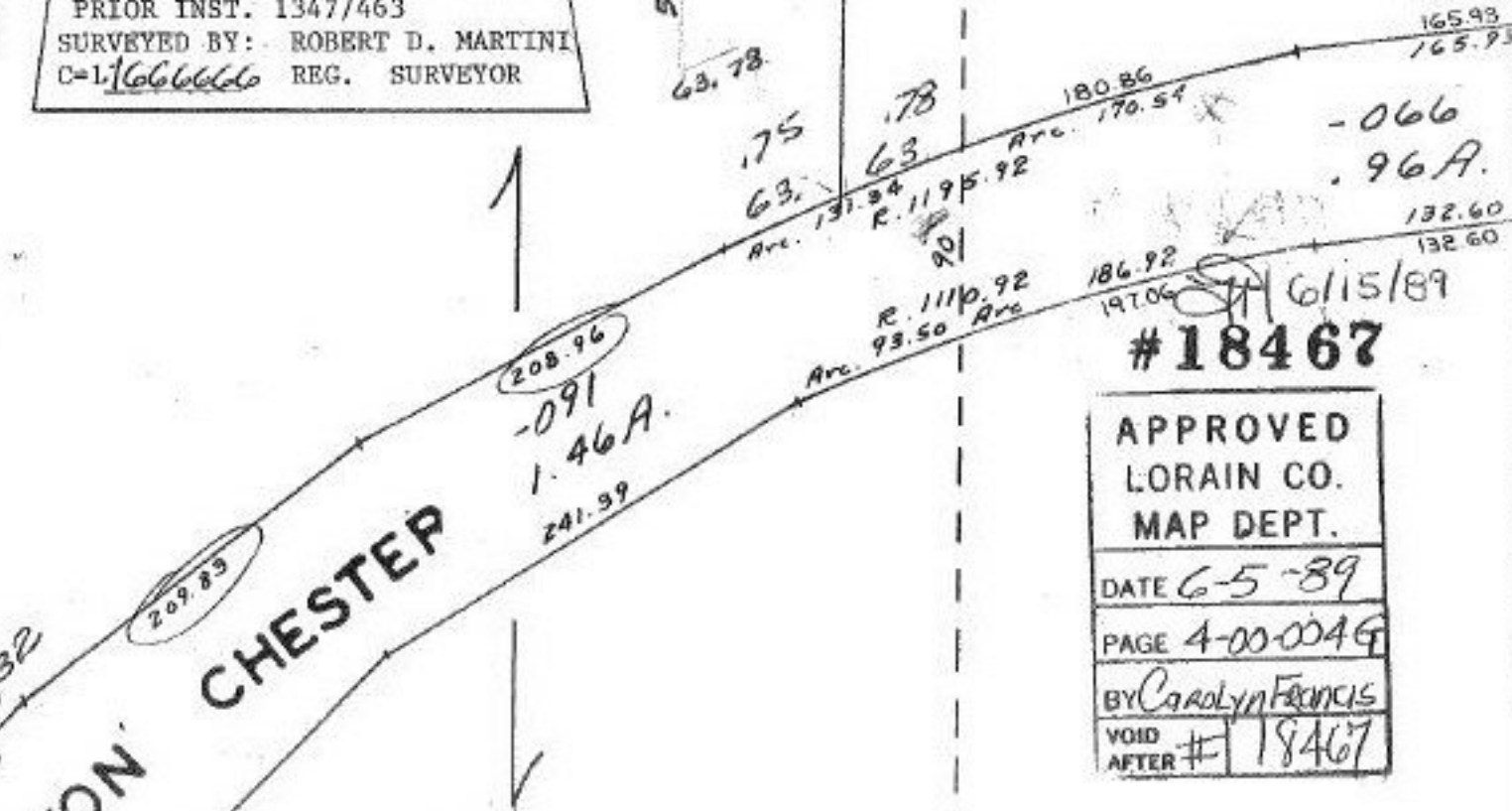
TAX MAP 721.25
SURVY 717.08
4.17

UNPAID
OUTPAID - 2856.70
TAXES - 870.45
1486.35
SELL OFF - 1265.00
REROLLING DISTANCE 721.25

REMAINING
TAX MAP 1265.00
+ 870.45
2135.45

TAX MAP 2856.70
Deduct 2135.45
TAX MAP 721.25 AT
Survey 117.08 FT. Remaining
DISTANCE ON WEST LINE.

VON CHESTER
209.89
208.96
-091
1.46 A.
241.99



6/15/89
#18467

APPROVED
LORAIN CO.
MAP DEPT.
DATE 6-5-89
PAGE 4-00-004G
BY Carolyn Francis
VOID AFTER # 18467