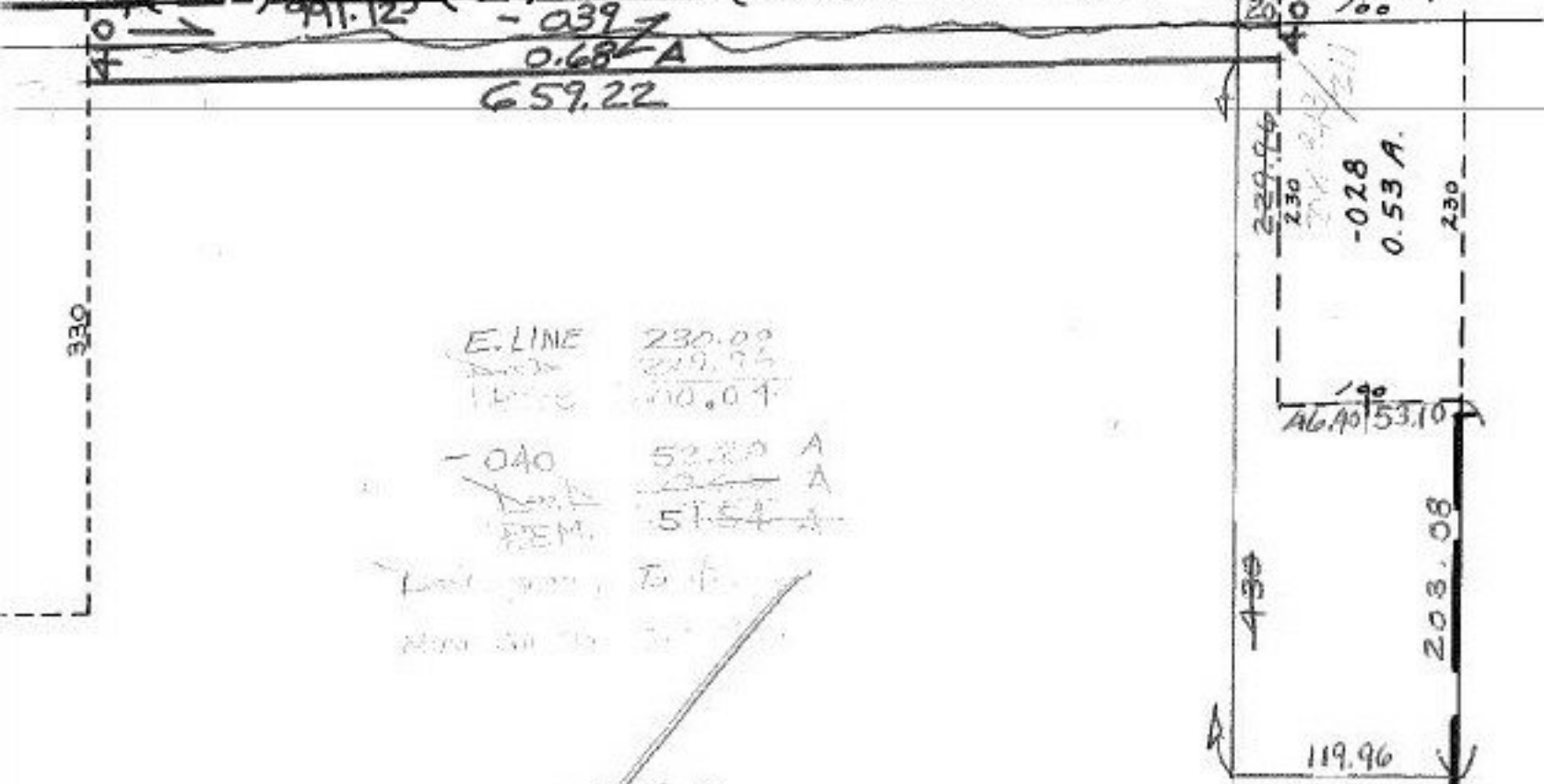
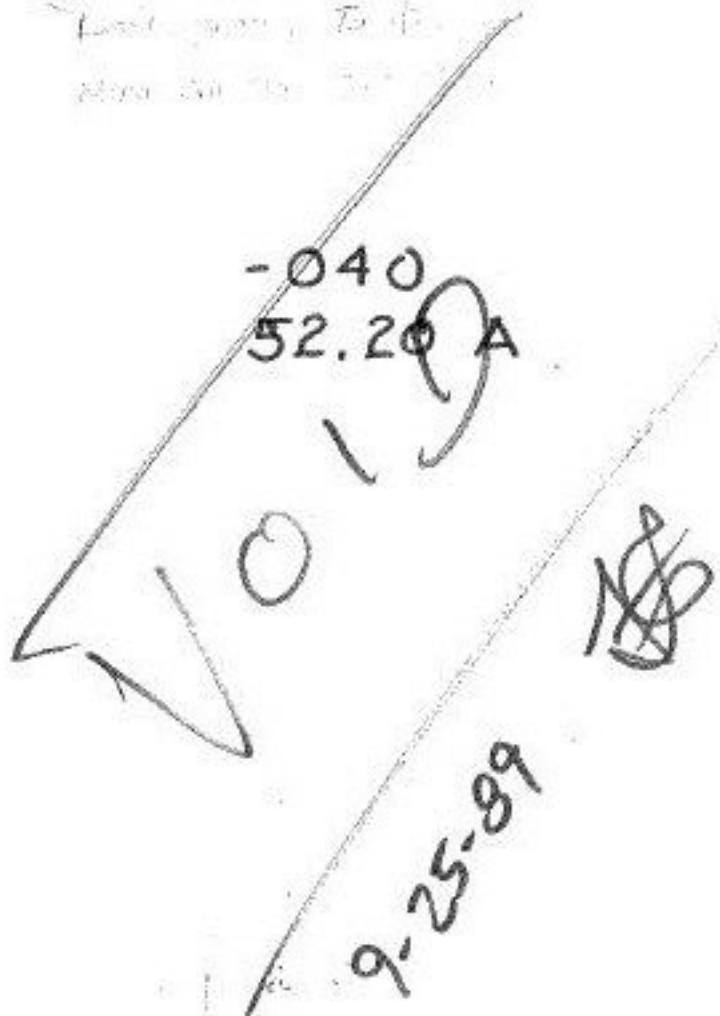


R FOSTER PARK Co. Comm. Res 68-1010



E. LINE 230.00
 229.96
 10.04
 -040 52.20 A
 51.54 A
 FEM.



~~-038~~
~~52.88 A.~~

10/12/89
#18454

APPROVED LORAIN CO. MAP DEPT.	
DATE	
PAGE 5-00-000A	
BY	
VOID AFTER	18454