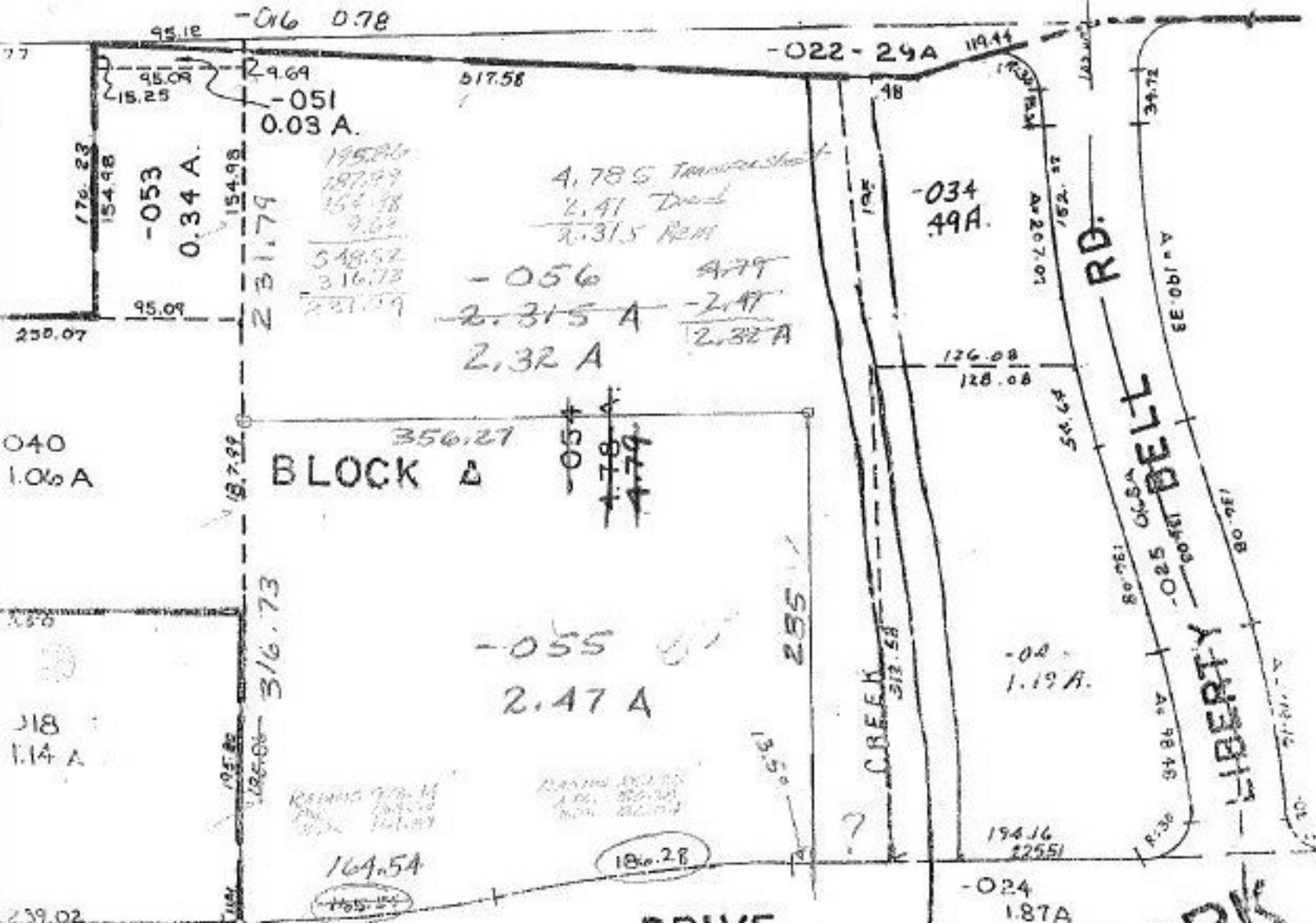


PER FOSTER PARK



05-00-041-101-
PRIOR INST. 1122/149
SURVEYED BY: MICHAEL G. HURA
C-1:333333. REG. SURVEYOR

PG. 2
10/12/89
#18429
APPROVED
LORAIN CO. MAP DEPT.
DATE 5-18-89
PAGE 5-00-041-A
BY: [Signature]
VOID AFTER # 18429

INDEPENDENCE
VOL 32

BLOCK C
-049
5.43 A.

101

PARK