

2.01A.

#18406

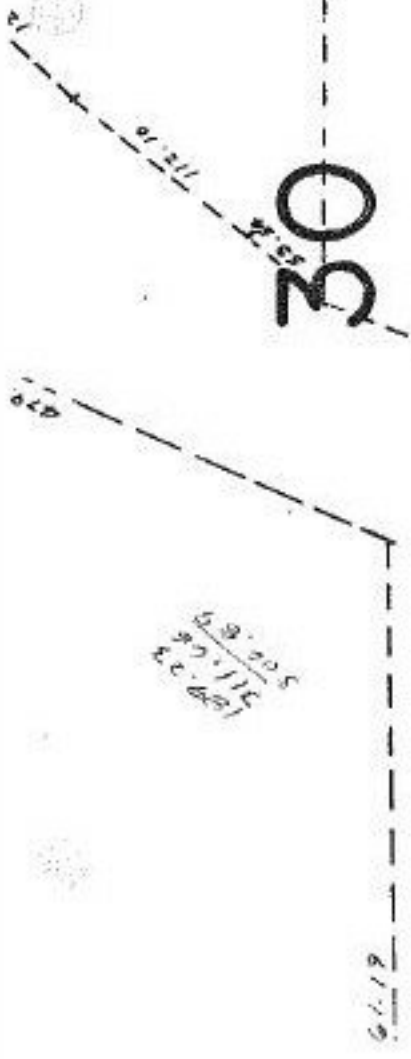
APPROVED
LORAIN CO.
MAP DEPT.

DATE 5-1-89

BY Carol Francis

VOID # 18406

020
42A
184.35



Pt. -054
Pt. 29.19A.

189.22
189.28

500.89
661.66

350

-106
1.77A

~~-091~~
~~2.98A~~

-1.07
1.23A
~~1.21A~~

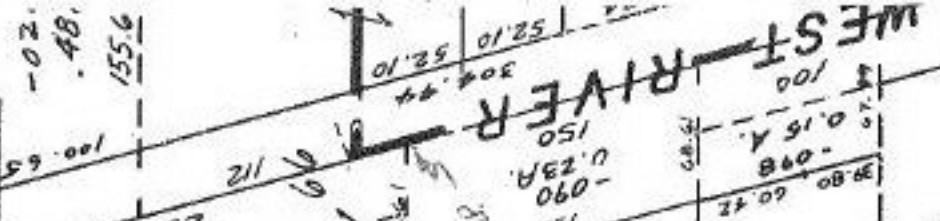
Rea Boundary
Survey by
K S Assoc.

536.67

10/18/89
#18406

-099
2.24A.

390.76



100.65
155.6

0.38
250

-097
3.17A.

~~-091~~
~~2.98A~~

-106
1.77A

189.22
189.28

Pt. -054
Pt. 29.19A.

61.19

APPROVED
LORAIN CO.
MAP DEPT.

DATE 5-1-89

PAGE 6-47

BY Carol Francis

VOID # 18406

SEE 6-65

06-24-030-000-
PRIOR INST. 1427/203
BOUNDARY SURVEY BY: KS ASSOC.
C-1: 333,333

NORTH