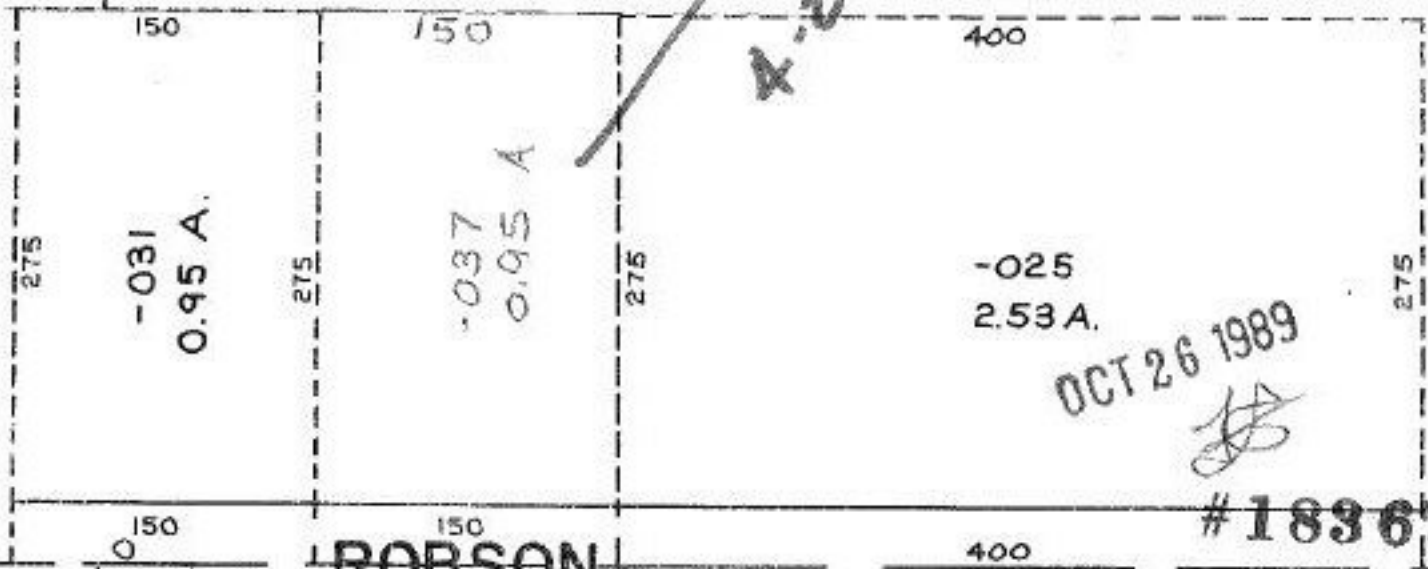


Pt. -036
Pt. 44.62

Pt. -038
Pt. 43.67 A

VOID
4-26-89



OCT 26 1989

#18367

10-00-015-116-

PRIOR INST. 1100/35

SURVEYED BY: ARNOLD KOEPP

C=1:INF. REG. SURVEYOR

MEDINA, ELYRIA Rd
ROBSON - RD.

APPROVED
ORAIN CO.
MAP DEPT.

DATE 4-10-89

PAGE 10-00-015-H

BY CAROL FRANKS

VOID
18367

116

Pt. -020

Pt. 16.86