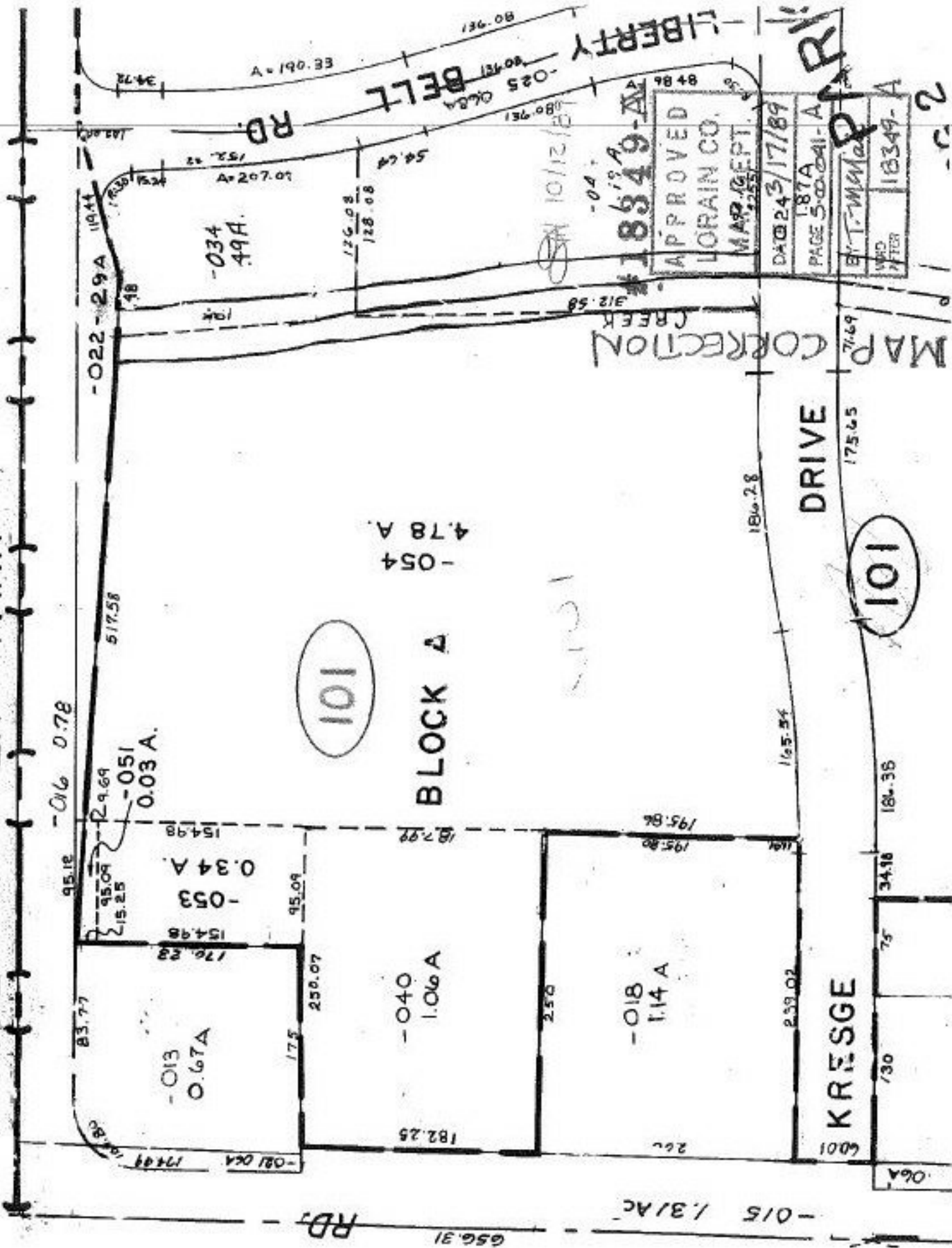


# COOPER FOSTER PARK



-034  
0.34A

101

BLOCK A

-054  
4.78 A

-013  
0.67A

-034  
0.34A

-051  
0.03A

-040  
1.06A

-018  
1.14A

MAP CORRECTION

18349-A

APPROVED  
LORAIN CO.  
MAP DEPT.

DATE 2/17/89  
PAGE 5-00-041-A

BY T. M. M...  
18349-A

DRIVE

101

KRESGE

-015 1.31AC

RD.

LIBERTY BELT

10/12/89

-C-2