

Twp.  
CITY

637 (640)

100

685  
COMM.

RES

238.95

08

28-993

12.30.88

1366

ORD. No.

737

TWP.  
CITY.

-060  
10.21A.

645

95

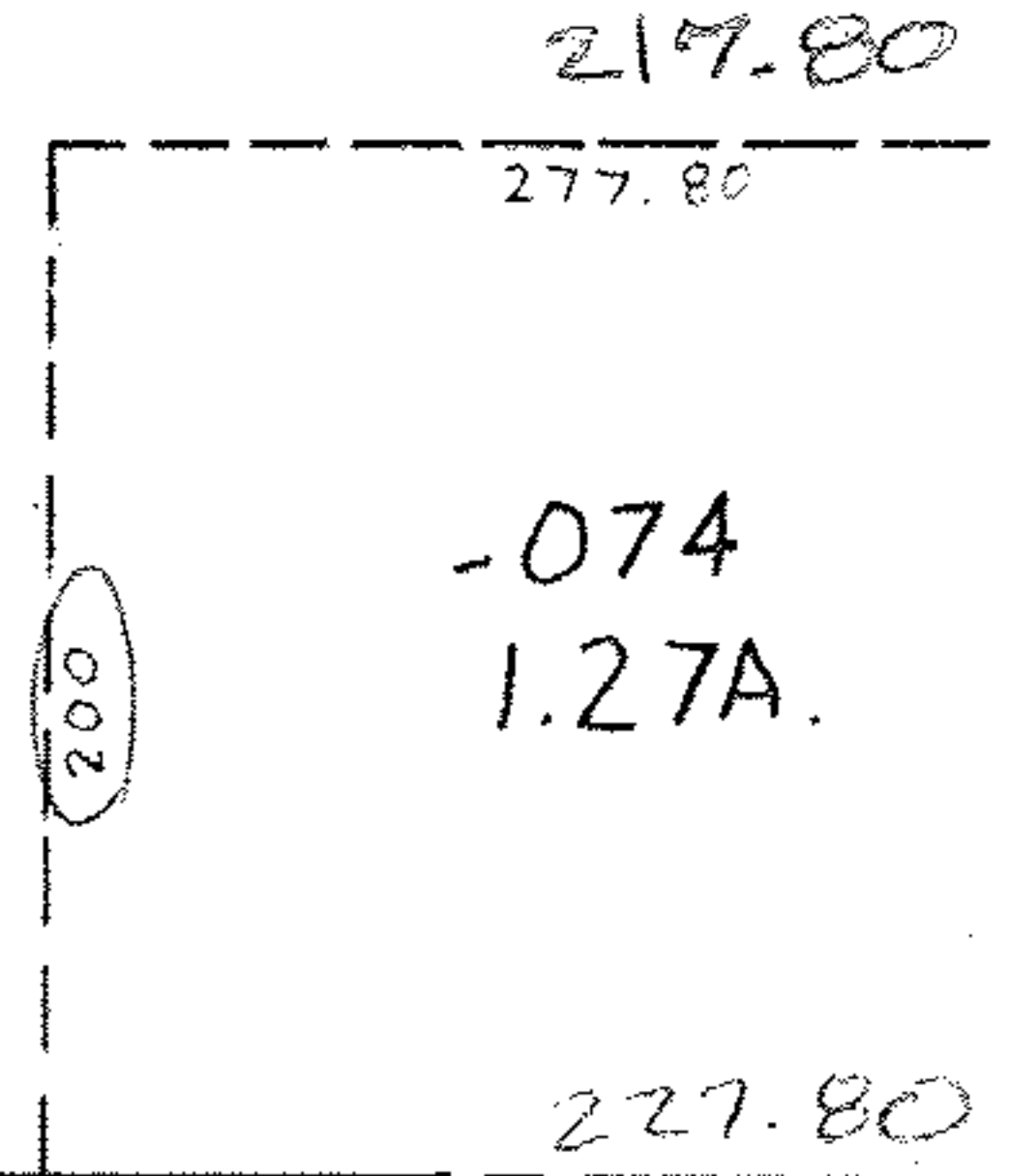
-073  
9.91A.

CITY OF AMH. ORD.

COMM. RES 28-993 12.30.88

200 OBERLIN - NORTH

ON 10/12/89  
ON 3/13/89  
#18340-A



APPROVED	
LORAIN CO.	
MAP DEPT.	
DATE 3-13-89	
PAGE 5-00-036B	
BY T. McHair	
VOID AFTER	18340-A

58

1420.3

SEE 5-00-035-B

110

705