

-001
4.80 A.

-002
12.00 A.

105

-003
29.75 A.

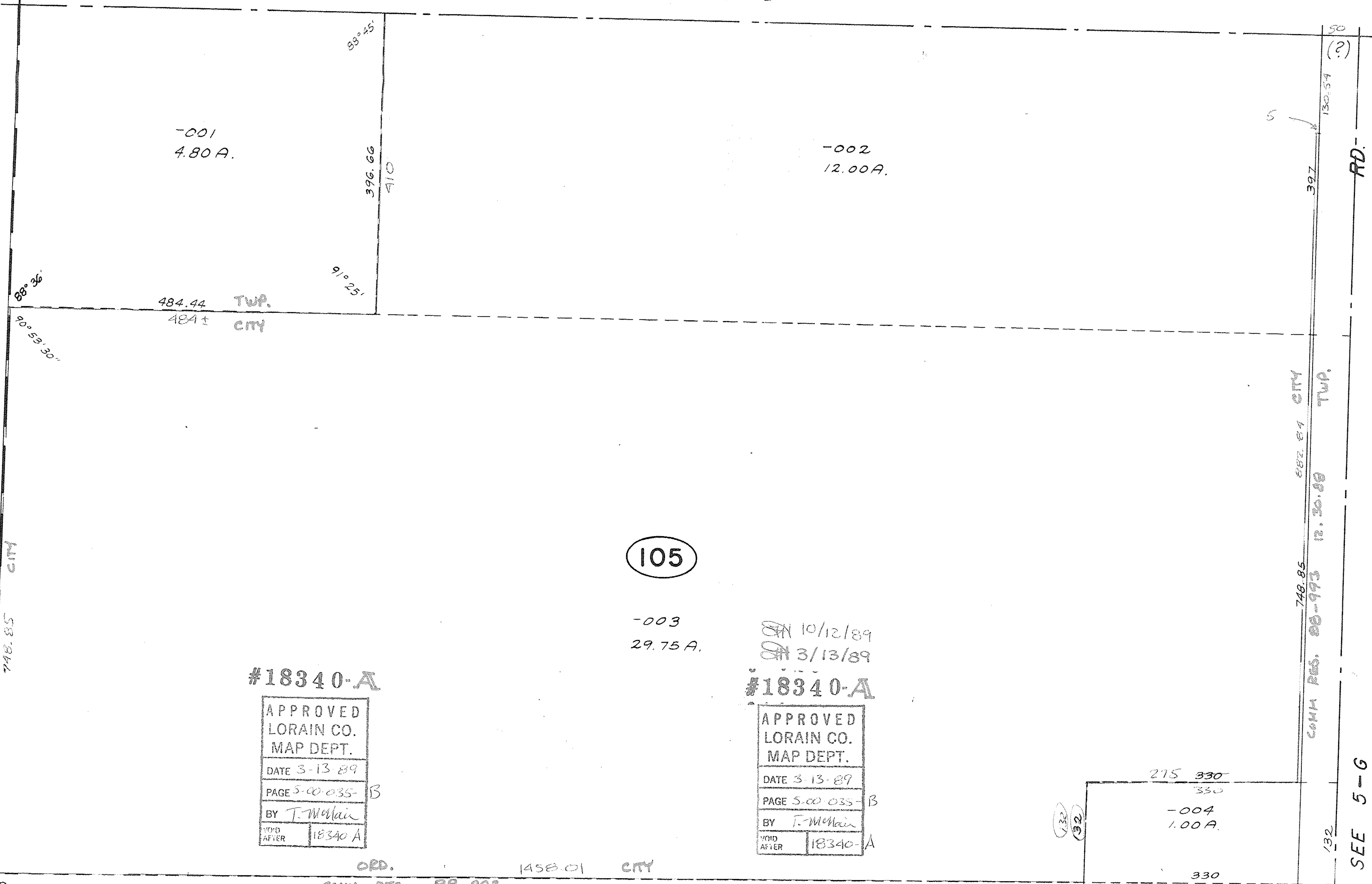
EN 10/12/89
SN 3/13/89

#18340-A

#18340-A

APPROVED	
LORAIN CO.	
MAP DEPT.	
DATE 3-13-89	
PAGE 5-00-035-B	
BY T. McHain	
VOID AFTER	18340-A

APPROVED	
LORAIN CO.	
MAP DEPT.	
DATE 3-13-89	
PAGE 5-00-035-B	
BY T. McHain	
VOID AFTER	18340-A



748.85 CITY

484.44 TWP.
484.5 CITY

396.66
410

748.85 CITY
882.84 CITY
COMM RES. 88-993 12.30.88 TWP.

RD.

SEE 5-G

ORD. 1458.01 CITY
COMM. RES. 88-993 TWP.

12.30.88

130.54
50
(?)

132

132
132