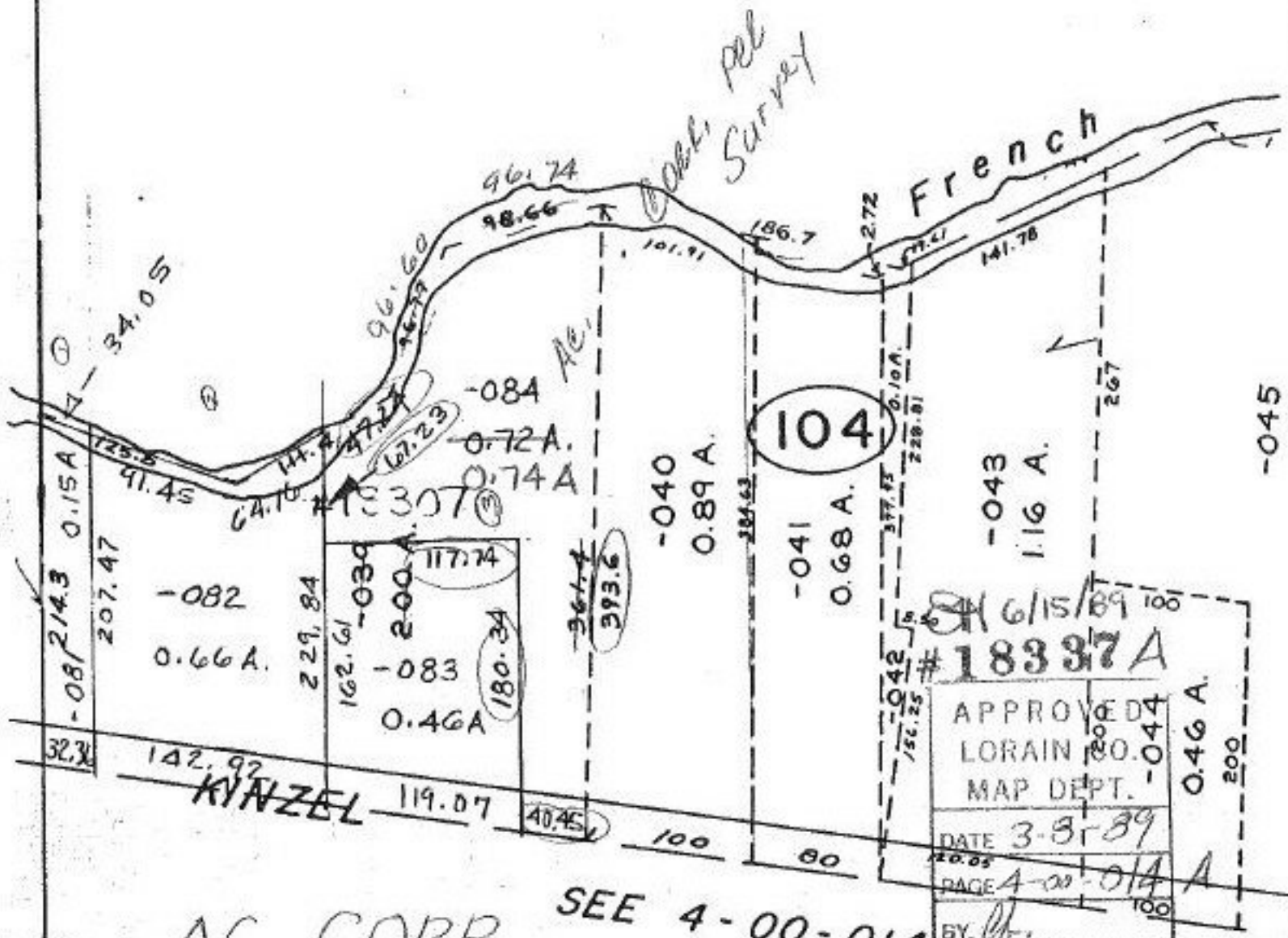


2.0000
 - .1549
 1.8451
 - .6576
 1.1875
 - .4634
 0.7241



AC. CORR.
 C=1:200000.

SEE 4-00-014

04-00-014-104-
 PRIOR INST. O.R. 75/335
 SURVEYED BY: MARTINI & ASSOC.
 (1) C=1: 43478
 (2) C=1: 200000.
 (3) C=1: 166666.

6/15/89 100
 # 18337 A
 APPROVED
 LORAIN CO. MAP DEPT.
 DATE 3-31-89
 PAGE 4-00-014 A
 BY [Signature]
 VOID AFTER # 18337-A
 # 18307

APPROVED
 LORAIN CO.
 MAP DEPT.
 DATE 7-1-89
 PAGE 4-00-014 A
 BY [Signature]
 VOID AFTER # 18307

AC. CORRECTION PER Survey
 by MARTINI & ASSOC.