

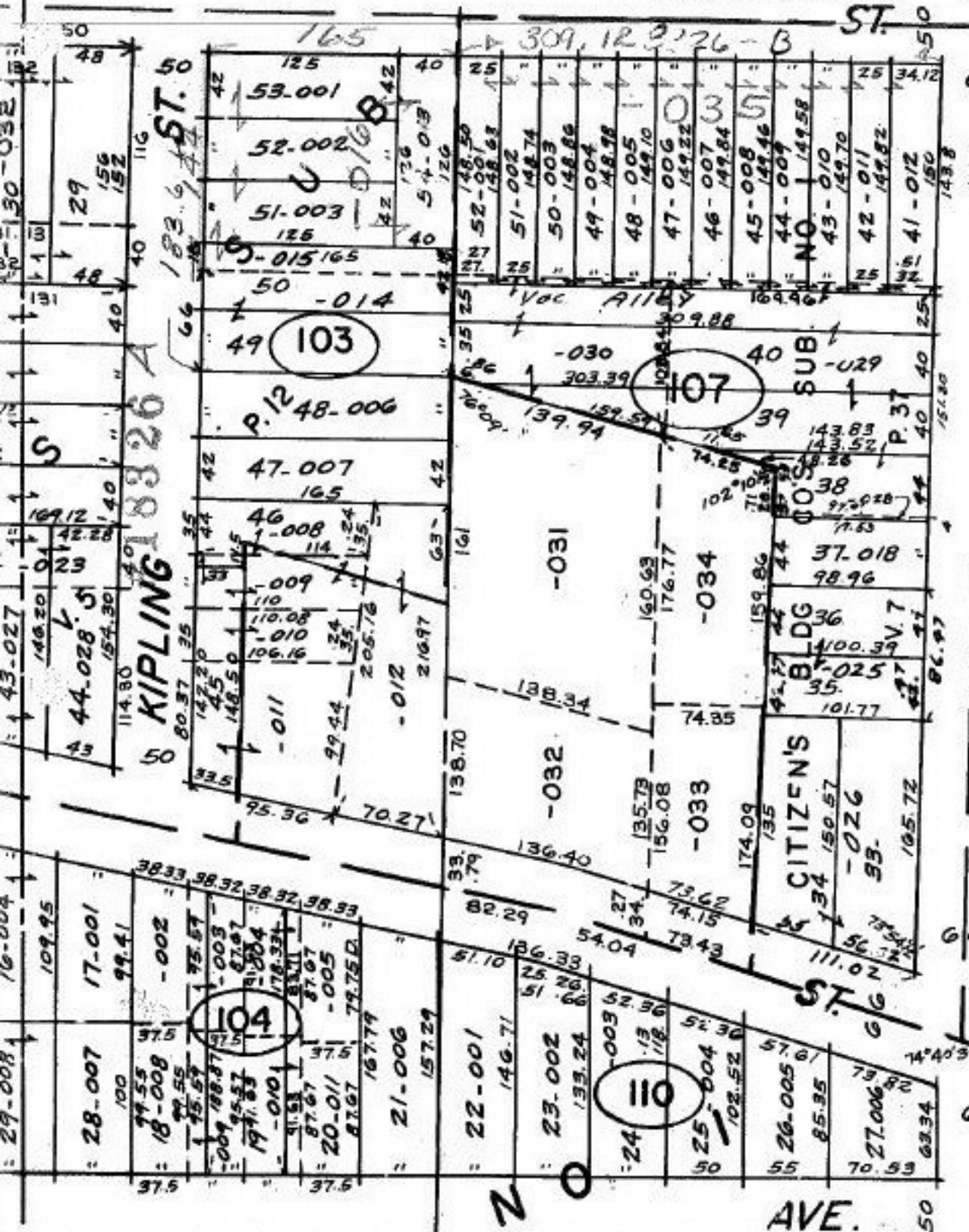
71

COMBINE

(A) 06-25-071-103-021-003

(B) 06-25-076-107-004-THRU

113, 018
512



ST. 5
#18326-B

COMBINATION

16

#18326 B
10/13/89
#18326 A

APPROVED
LORAIN CO.
MAP DEPT.

DATE 2-24-89

PAGE lot 122

BY Carl Francis

VOID
METER # 18326 A