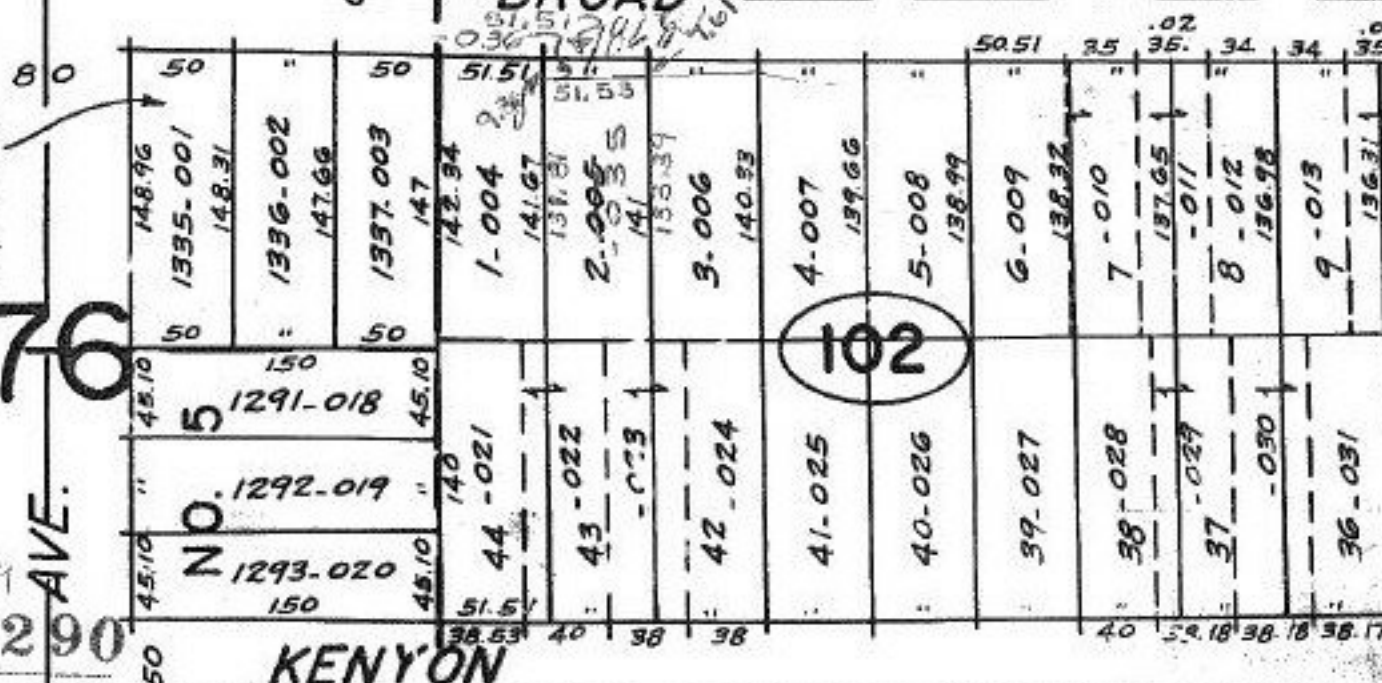
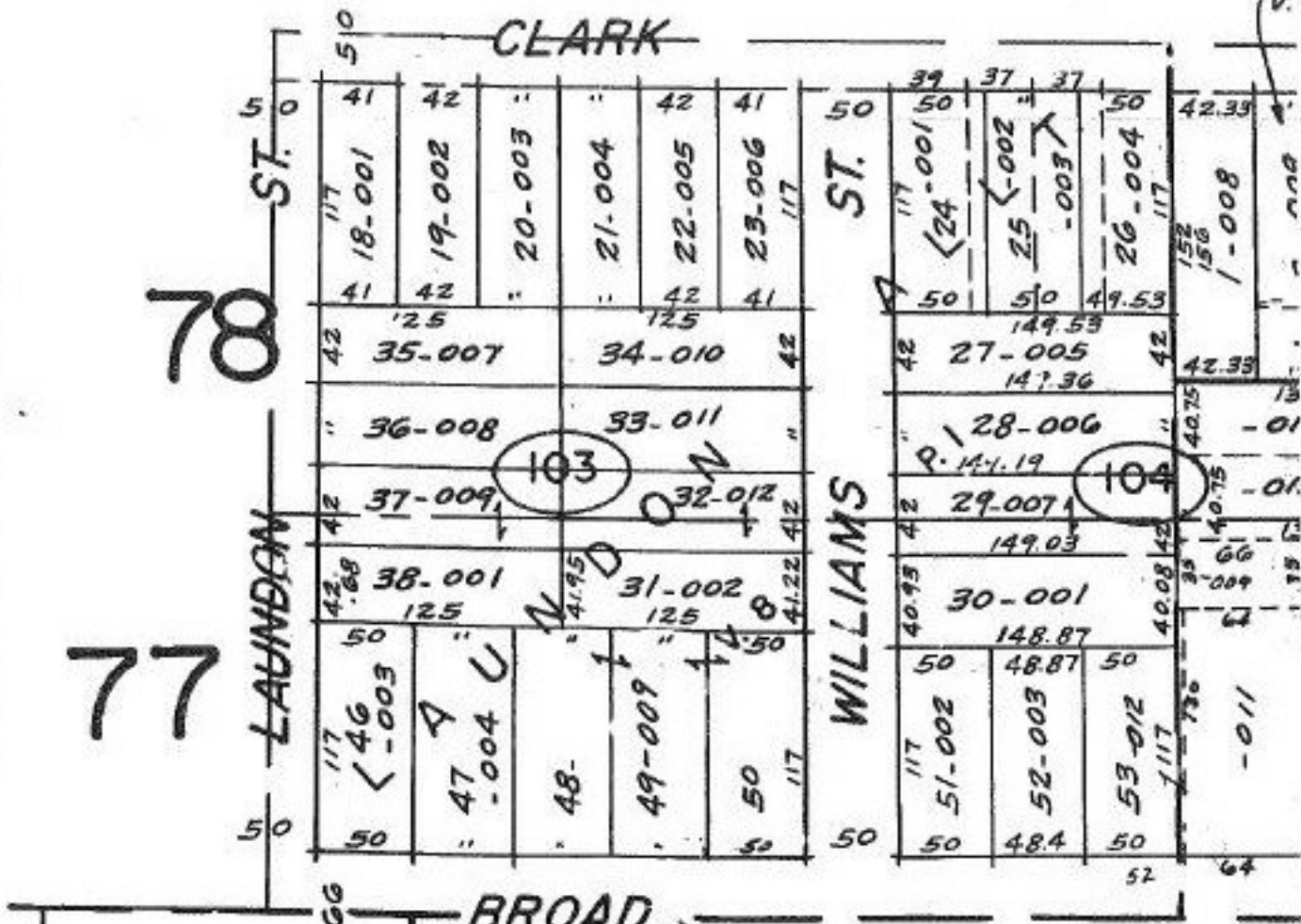


06-25-076-102-
PRIOR INST. 1405/794
PARCEL MAP BY: LONNY G. SHIPPY
REG. SURVEYOR

ERSTERN HGHTS.
LRND CO. SUB. NO. 4
V. 7 P. 52



NO. 76
AVE.
#18290

APPROVED
LORAIN CO.
MAP DEPT.

DATE 2-10-89

PAGE 6-122

BY Carol Francis

VOID AFTER 18290

110	1294-001	44	44.5
110	1295-002	44	44.5
110	1296-003	44	44.5
110	1297-004	44	44.5
110	1298-005	44	44.5
110	1299-006	44	44.5
110	1300-007	44	44.5
110	1301-008	44	44.5
110	1302-009	44	44.5
110	1303-010	44	44.5
110	1304-011	44	44.5
110	1305-012	44	44.5
110	1306-013	44	44.5
110	1307-014	44	44.5
110	1308-015	44	44.5
110	1309-016	44	44.5