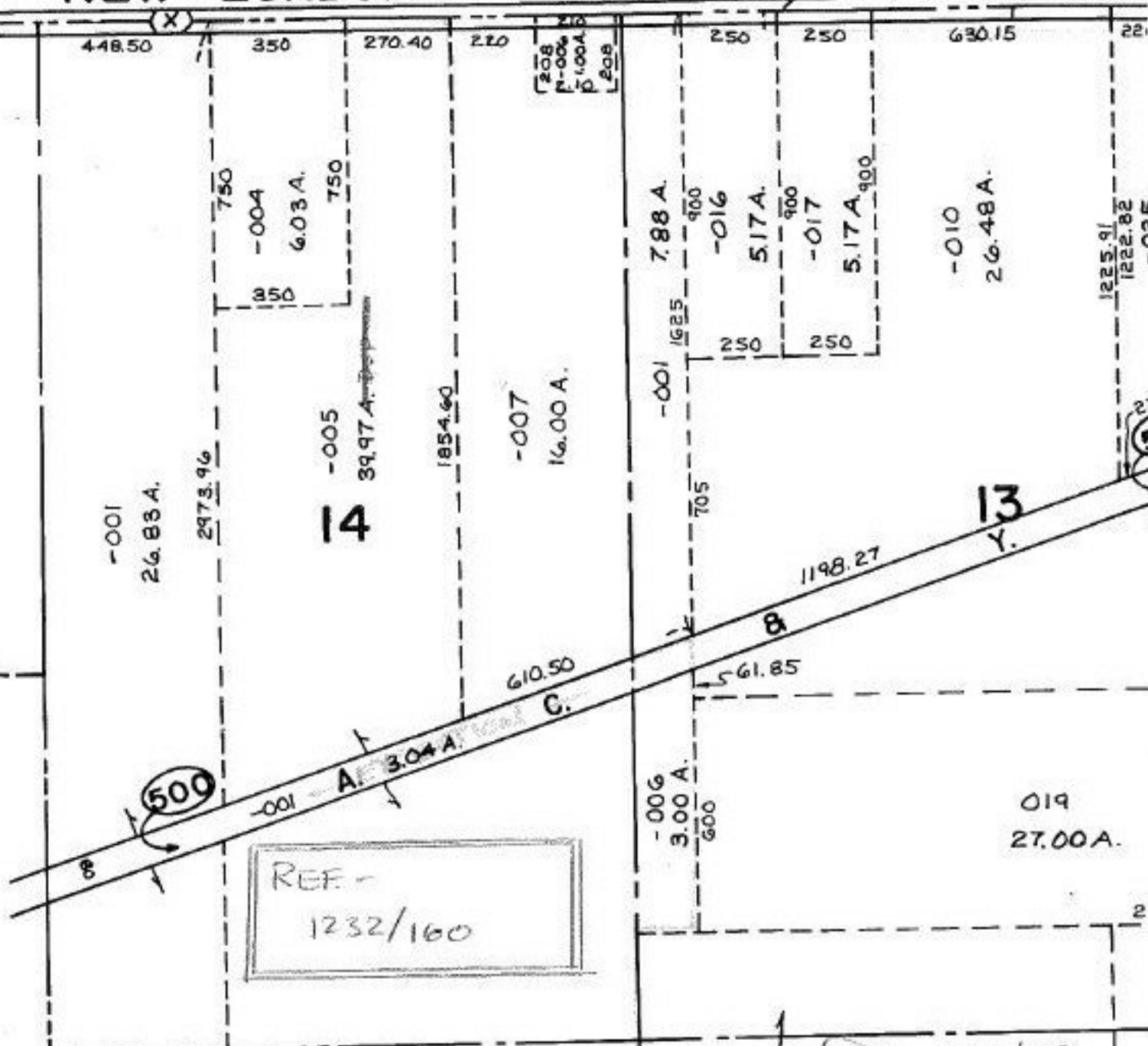


# NEW LONDON - LAFAYETTE

2085



REF -  
1232/160

~~8.00 A.~~  
3.00 A.

DRAFTING ERROR SHOWED THIS DIMENSION AS 3 A. INSTEAD OF 8 A. THAT WAS ON MAP & DUP. PREVIOUSLY - ACTUAL

ACREAGE IS STILL IN QUESTION SHOULD BE SURVEYED

3/30/89  
#18290-A

DUP. IS OK

MAP CORRECTION

APPROVED	
LORAIN CO.	
MAP DEPT.	
DATE 1-19-89	
PAGE 21-H	
BY T. McMan	
VOID AFTER	18290-A