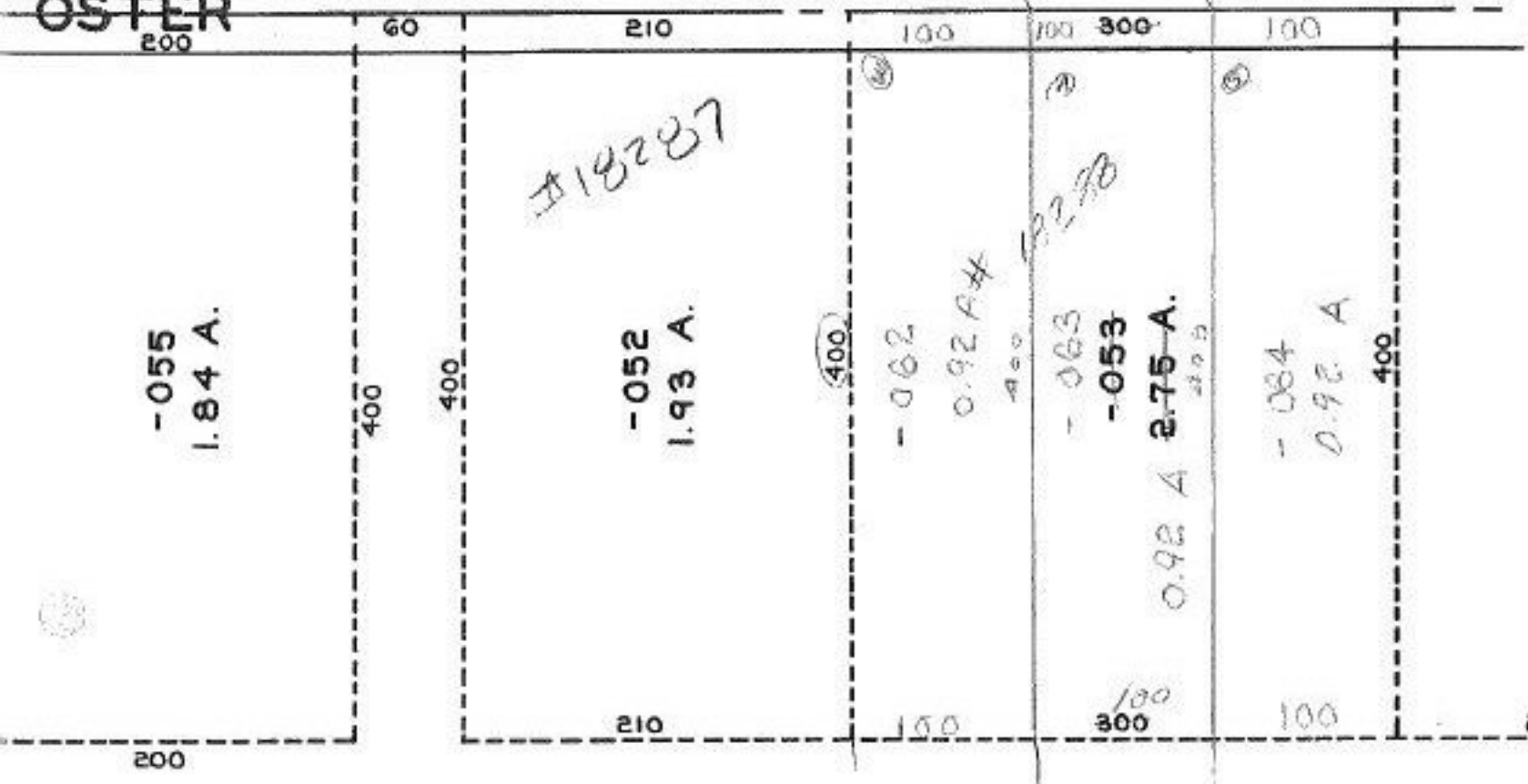


SEE 3 - 00 - 036 - B

OSTER



03-00-024-000-
 PRIOR INST. O.R. 72/525
 SURVEYED BY: K S A
 C=1; INF. Parcels 1,2,3

SN 3/3/89
 #18288

APPROVED
 LORAIN CO.
 MAP DEPT.

DATE 1-13-89

PAGE 8-00-024-B

BY *Paul James*

VOID AFTER # 18288

- 051
 14.28 A.

616.01