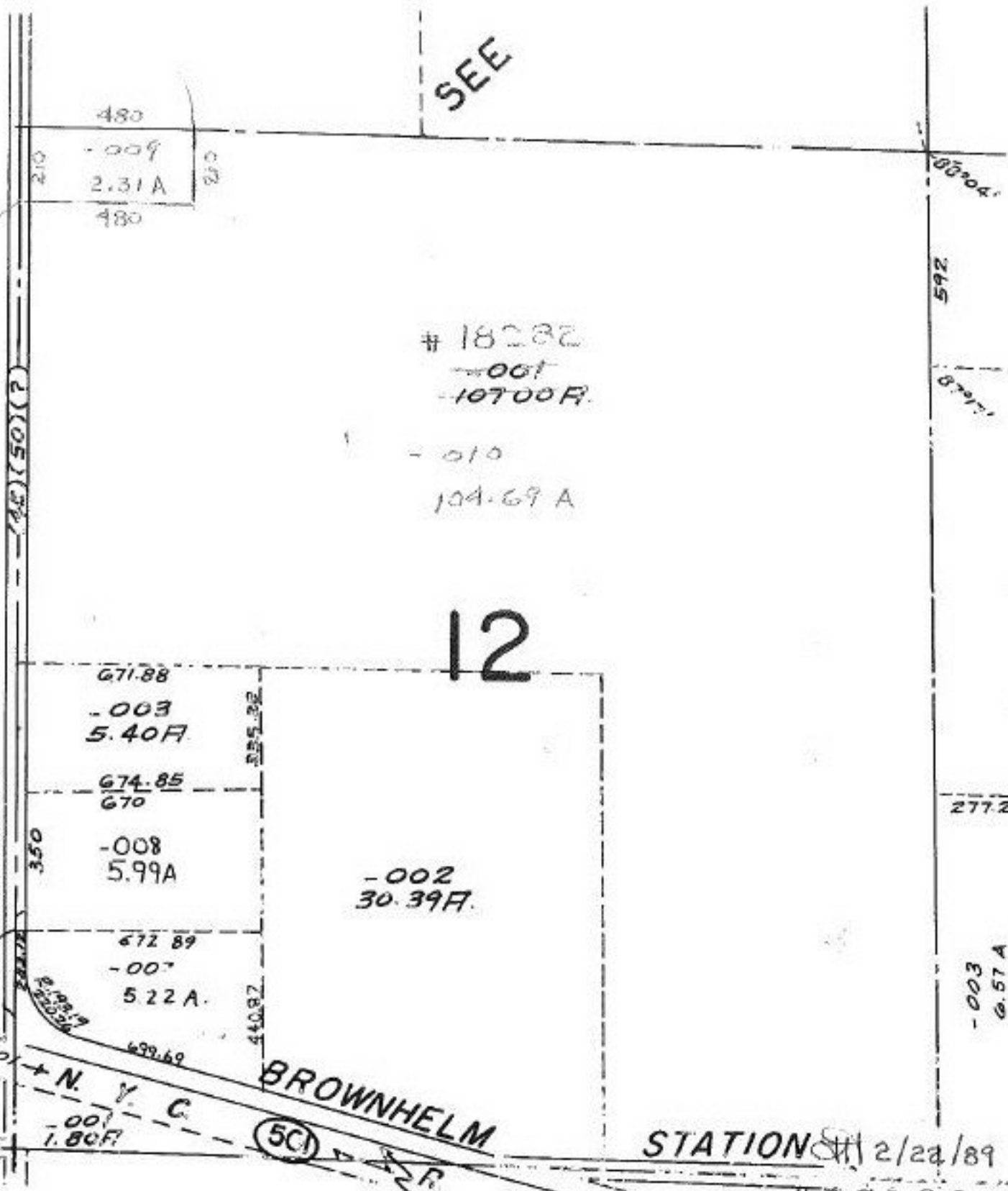


SEE



12

SUNNYSIDE

BROWNHelm

STATION 2/22/89

#18282

01-00-012-000-  
 PRIOR INST. D.V.1222/317  
 SURVEYED BY: MICHAEL G. HURA  
 C=1:INF REG. SURVEYOR

APPROVED  
 LORAIN CO.  
 MAP DEPT.  
 DATE 1-12-89  
 PAGE 1-C  
 BY *Carol Ferris*  
 VOID AFTER # 18282

LOTS 5, 6, 11, 12