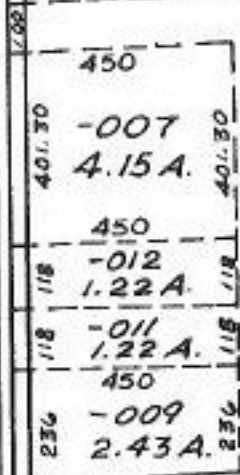


21C

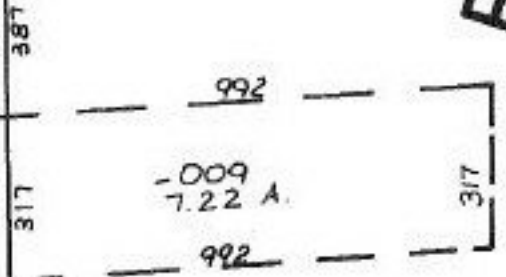


-005
51.08 A.

A

2289
2742.30

R

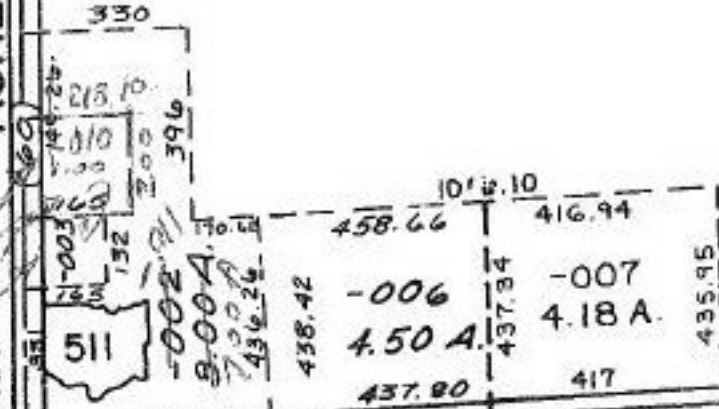


28

-008
66.30 A.

-005
50.76 A.

ASHLAND - KIPTON



3/27/89

1213.62

303

WAKEMAN - LAGRANGE - RICHFIELD # 18268

Rebar

13-10-028-000-
 PRIOR INST. 1006/97
 SURVEYED BY: JOHN HAMILTON
 C=1:INF, REG. SURVEYOR

APPROVED LORAIN CO. MAP DEPT.	
DATE 12-27-88	
PAGE 13-C	
BY <i>Carl Francis</i>	
VOID AFTER	11/18/88