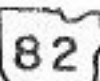


12-00-075-B

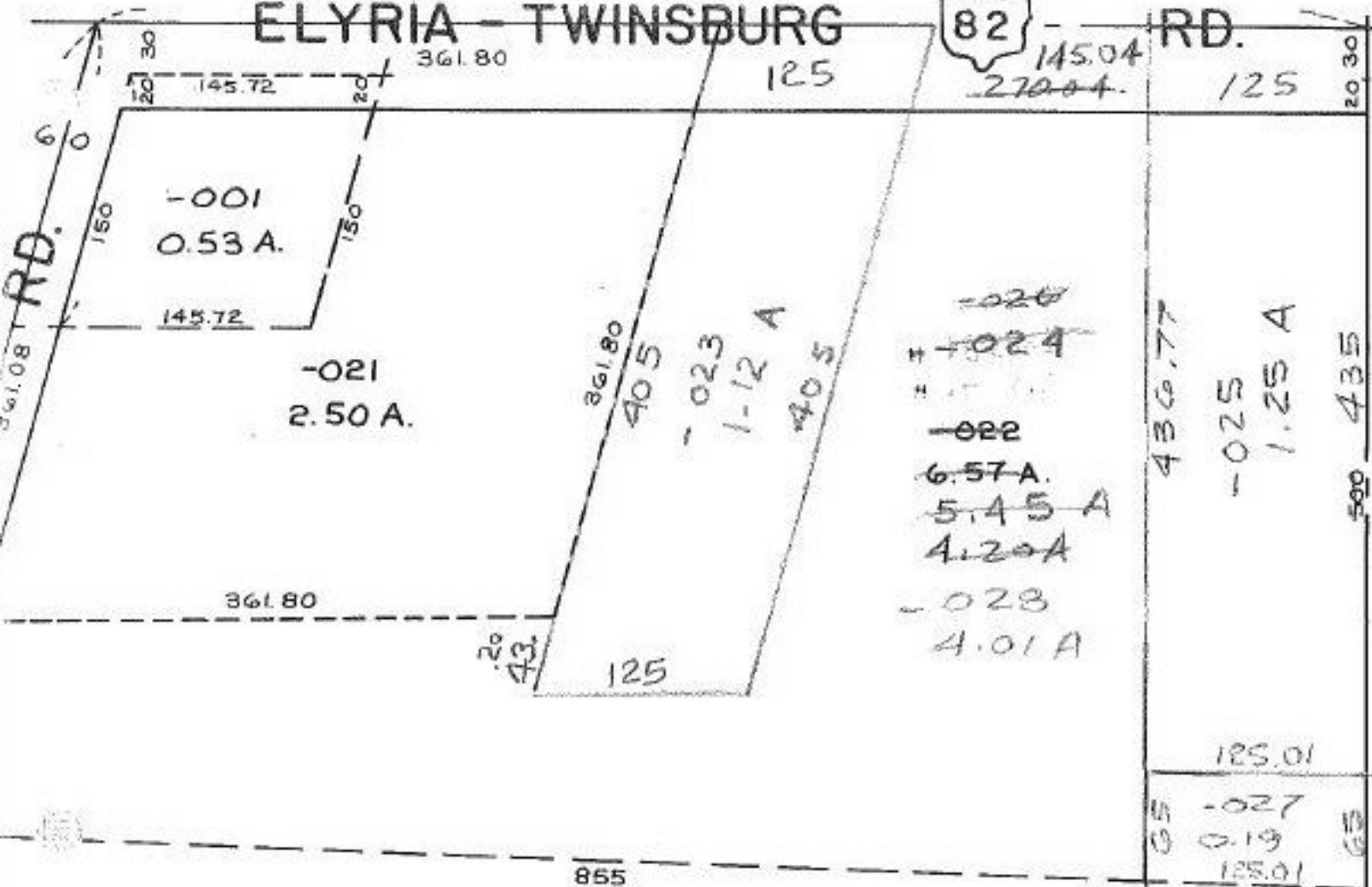
756.84

ELYRIA - TWINSBURG



RD.

RD. 6



104

12-00-075-104-
 PRIOR INST. 1183/881
 SURVEYED BY: JOHN R.
 HAMILTON REG. SURV. - 017
 C=1:INF.
 18.52 A.

3/24/89
 #18263

APPROVED
 LORAIN CO.
 MAP DEPT.
 DATE 2-22-88
 PAGE 12-00-075-B
 BY *Barclay Francis*
 VOID AFTER # 18263

834.56