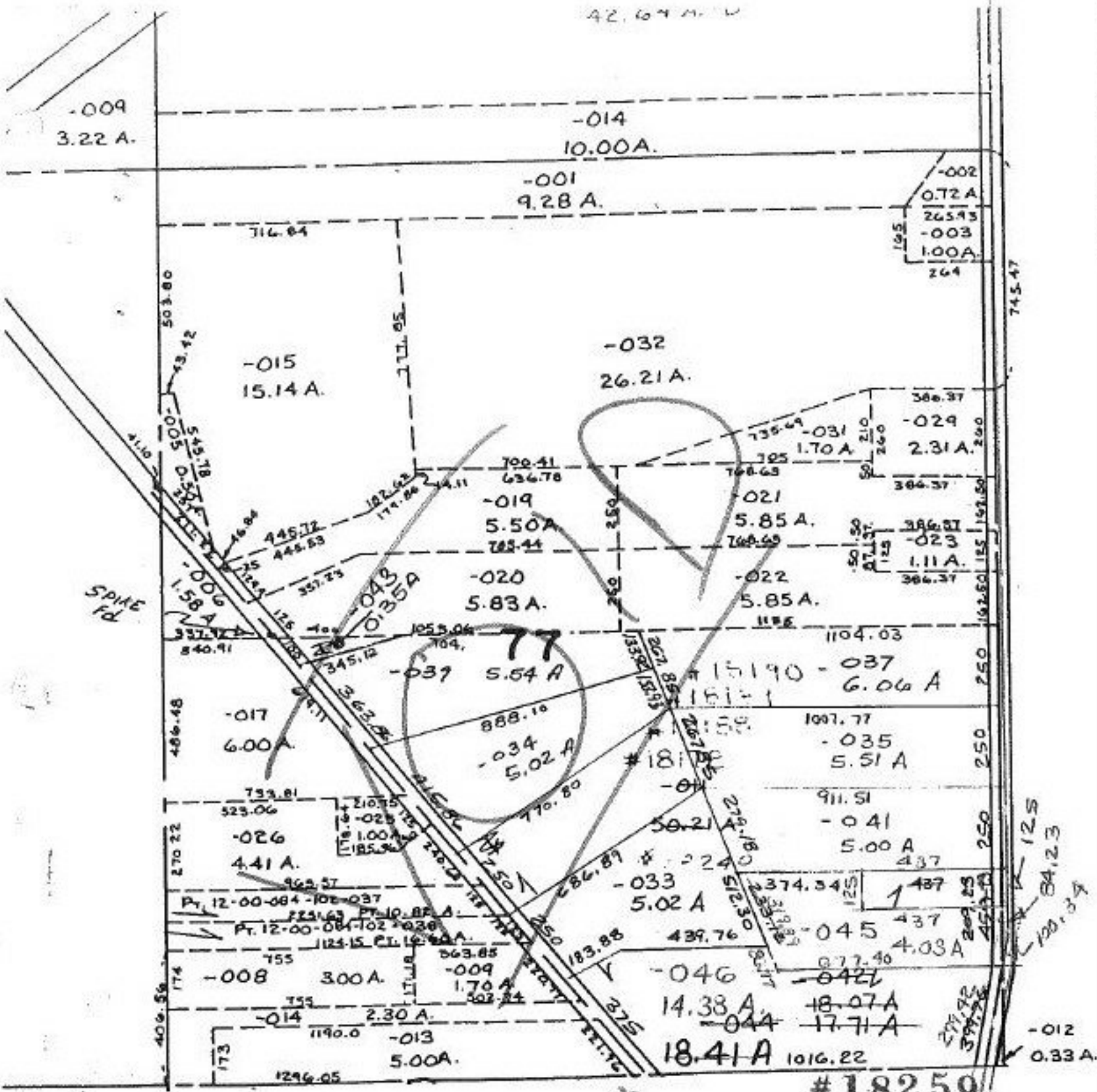


42.67 N. W.



12-00-077-000-
 PRIOR INST. 687/351
 SURVEYED BY: K S ASSOC.
 C=1:333333.

#18259

APPROVED
 ORAIN CO.
 MAP DEPT.

DATE 12-19-88

PAGE 12-A

BY CAROL FRANKS

VOID AFTER # 18259

1-3-88

125
 84.23
 120.37