

SEE 12-00-076-B

ELYRIA-TWINSBURG



RD. 125

145.04
270.04

756.84
125

361.80

145.72

150

150

RD.

80.198

60

150

145.72

150

361.80

RD.

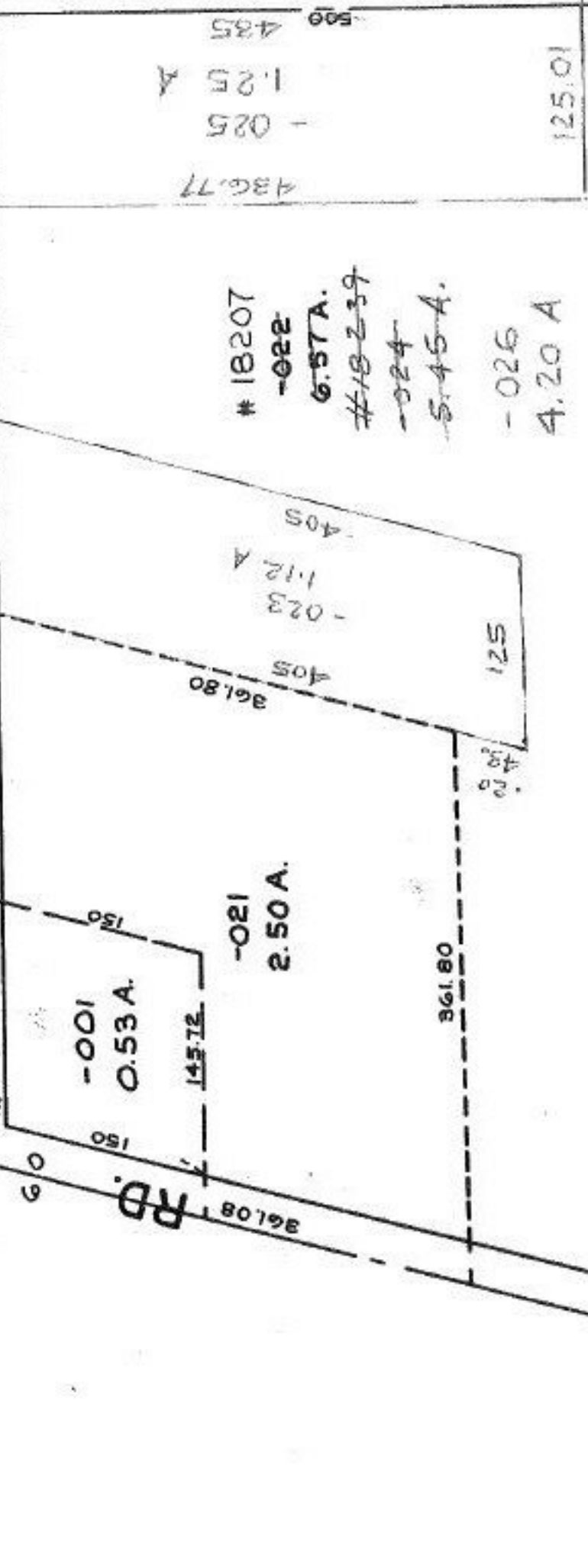
125

125

125

125

125



18207
-022
6.57A.
~~#18239~~
~~024~~
~~5.45A.~~
-026
4.20 A

405
1.12 A
-023
405

361.80
125

361.80
RD.
125

125
125

125
125

125
125

125
125

MS
3/24/89
18239

APPROVED
LORAIN CO.
MAP DEPT.
DATE 11-30-88
PAGE 12-00-075A
BY CAROL FRANCIS
VOID AFTER # 18239

12-00-075=104-
 PRIOR INST. V. 1183/881
 SURVEYED BY: JOHN R. HAMILTON
 C-1:71428 REG. SURVEYOR

104

1890.90
06.068
1892.13