

1496.90

D.V. 1095/458

Pt. -001  
Pt. 17.50A.  
#18172 Pt. 17.53A.

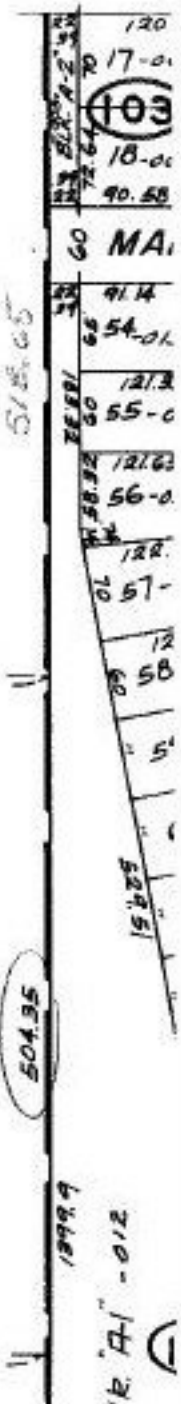
1489.2

D.V. 1095/458-9

Pt. -002  
Pt. 17.50A.  
Pt. 17.55A

1542.5

1540.2



SH. 1/24/89  
#18172-A

APPROVED	
LORAIN CO.	
MAP DEPT.	
DATE 10-17-88	
PAGE 4-00-024-C	
BY T. McNamee	
VOID AFTER	18172-A