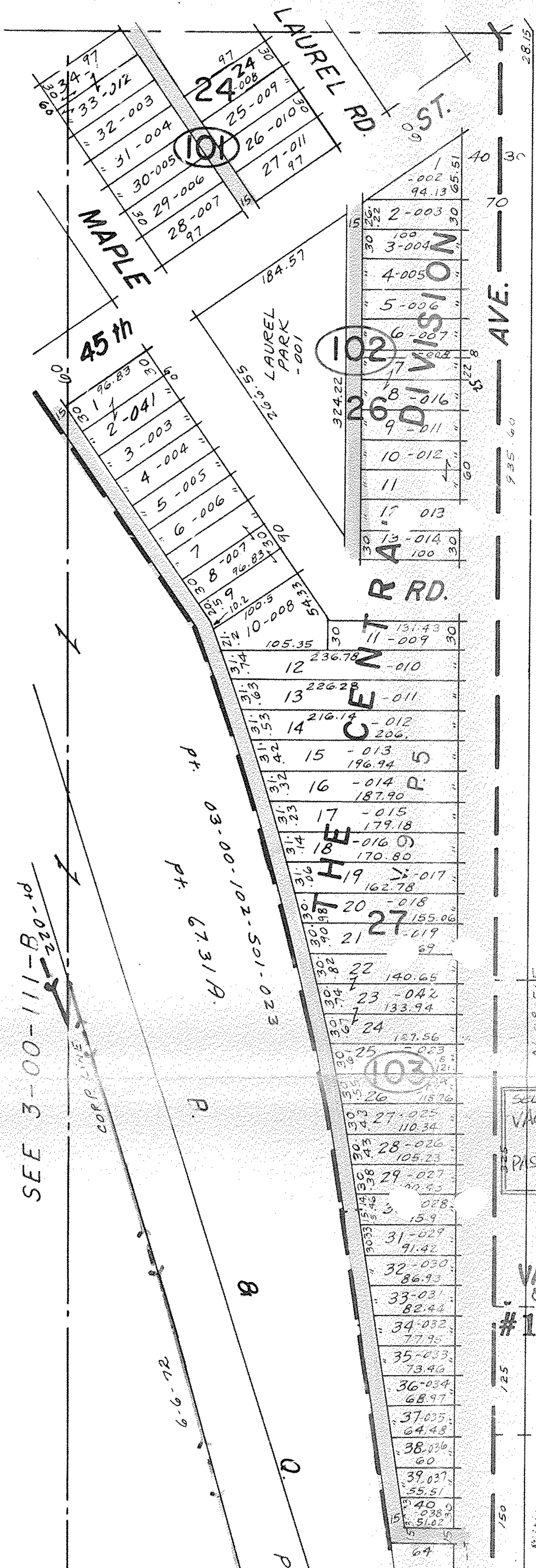


429.75



SEE 3-00-111-B-10

CORP. LINE

PT. 03-00-102-501-023
PT. 67.31A.

B

6-6-72

D

PT.

26 DIVISION

102

103

28.15

40

70

AVE.

935.60

SEE VAC. ORD 171-87
PASSED 12/7/87

ALLEY
VACATION
ON 3/3/89
#18166-A

APPROVED
LORAIN CO.
MAP DEPT.
DATE 10-20-88
PAGE 3-00-110-A
BY T. McMain
VOID AFTER 18166-A

-034
7.86A.

422.18

-043
3.13A.

41.61

-042
20A.

417.23

-041
143A.

415.58