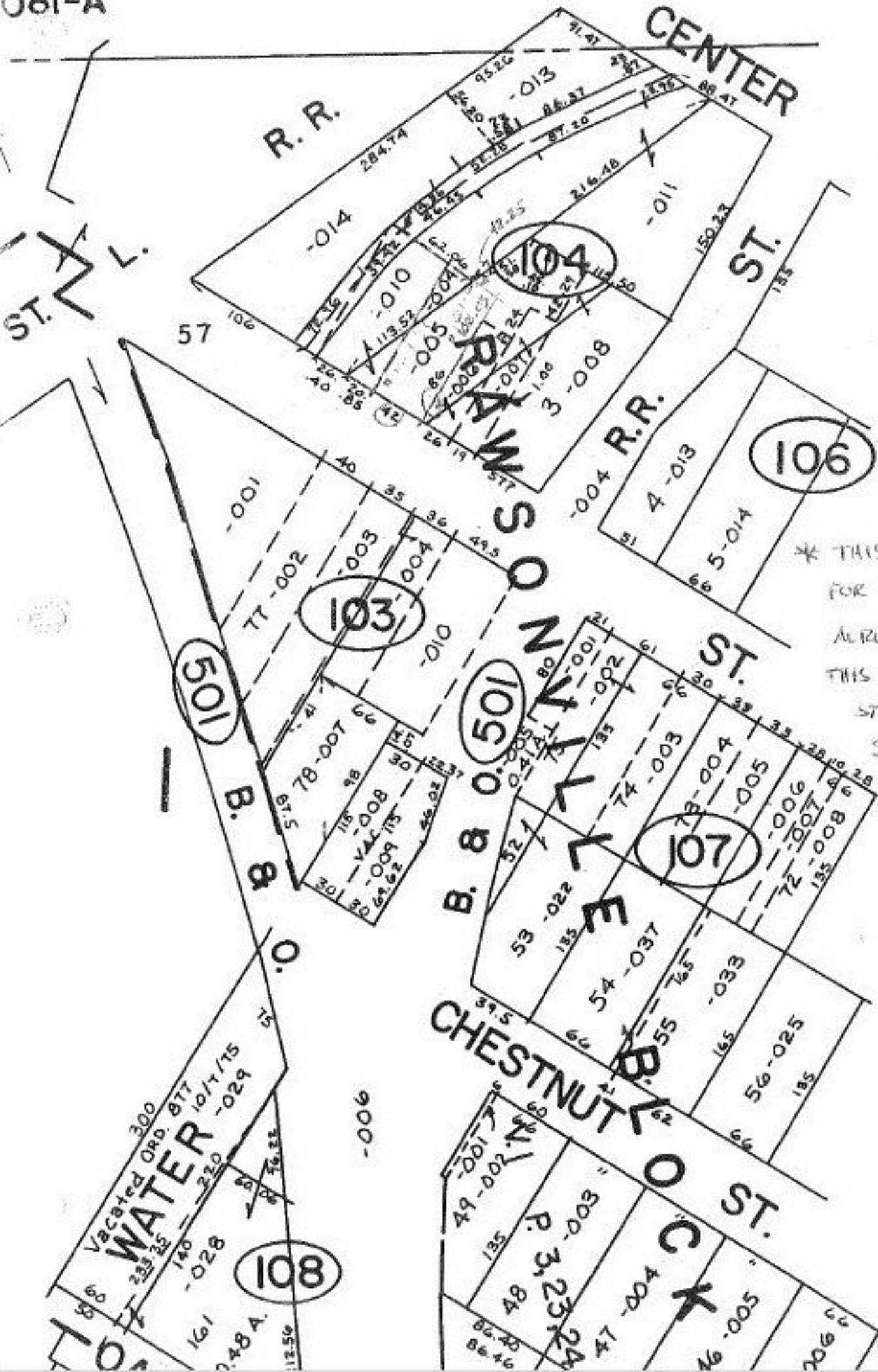


081-A



* THIS DEED SUBMITTED FOR SPLIT BUT PARCEL ALREADY EXISTED. THIS MAKES DEED A STRAIGHT TRANSFER. SEE #18118 FOR SPLIT.

ON 10/19/88

#18150

APPROVED
LORAIN CO.
MAP DEPT.

DATE 7-29-88

PAGE 16-00 OF 1-C

BY T. McMan

VOID AFTER 18150