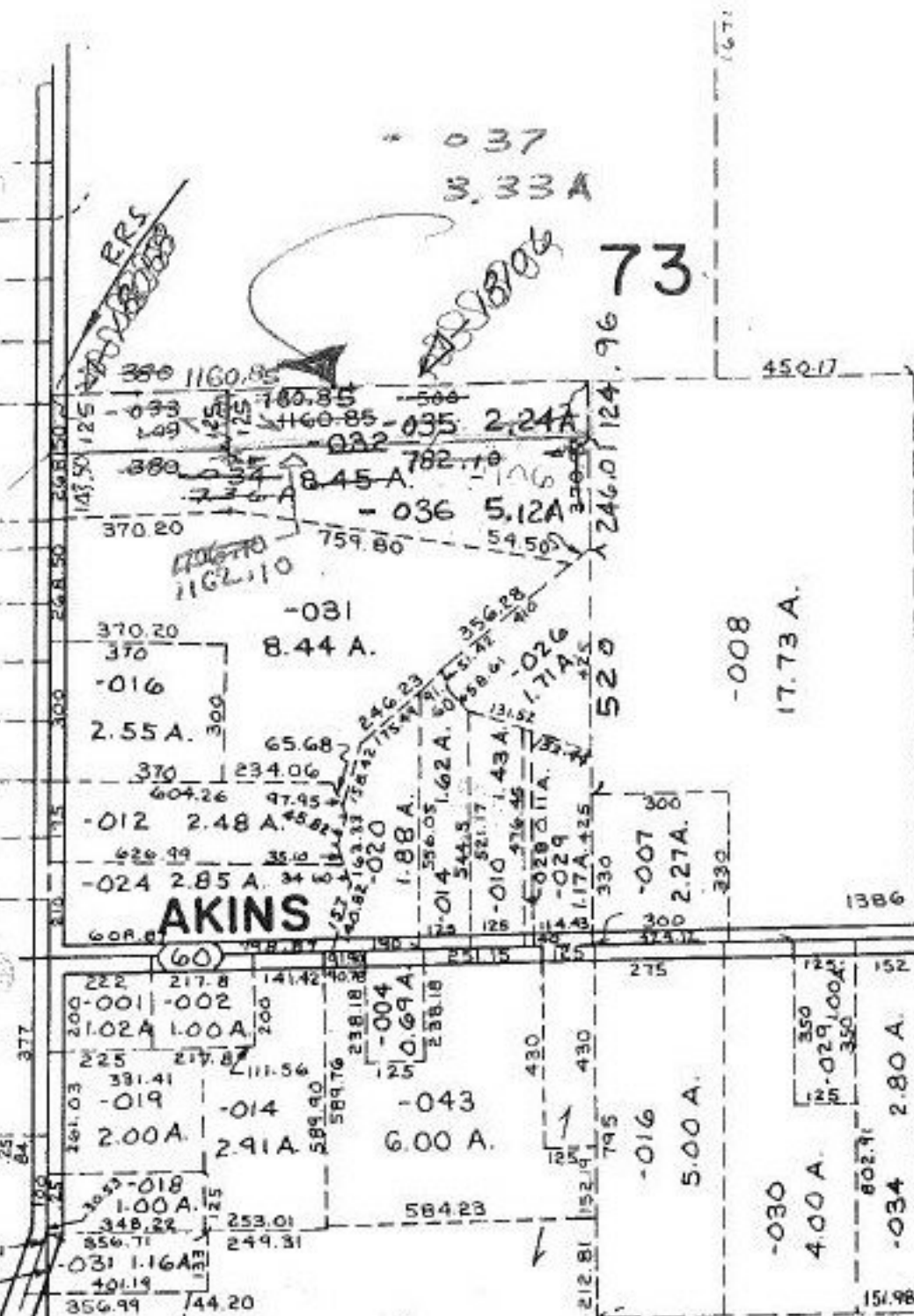


SEE 12-F

-030  
62.54 A.

73



AKINS

RD. 8126A

10/19/88

APPROVED  
LORAIN CO.  
MAP DEPT.

DATE 10-4-88

PAGE 12-E

BY Carol Francis

VOID AFTER # 18126A

COMBINATION

72

-044  
65.36 A.

#18106

APPROVED  
LORAIN CO.  
MAP DEPT.

DATE 9-1-88

PAGE 12-E

BY Carol Francis

VOID AFTER # 18106

12-00-073-000-  
PRIOR INST. O.R. 78 P.837  
SURVEYED BY: JOHN HAMILTON  
C=1:500,000

-007