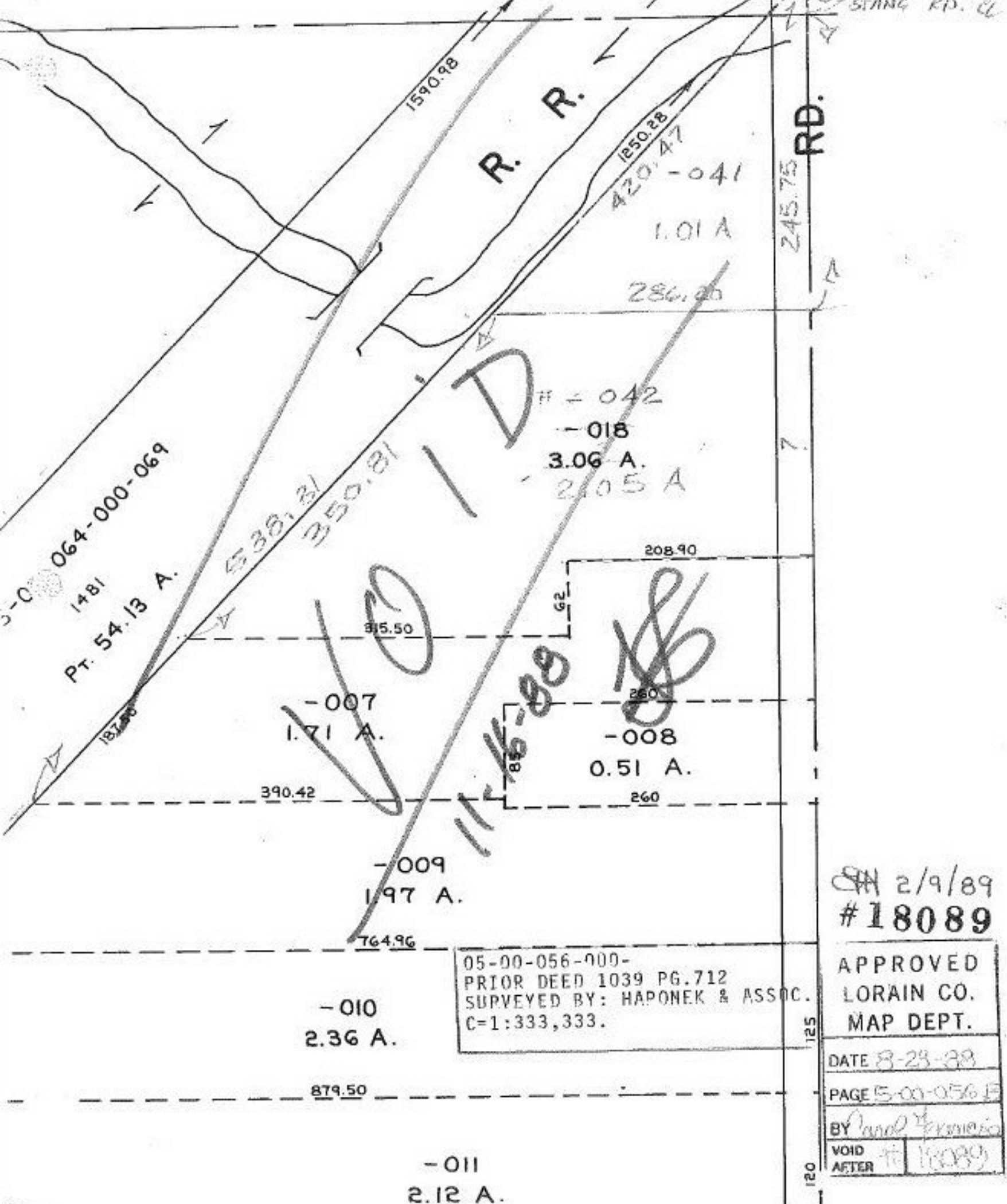


E 5-00-057-B



05-00-056-000-  
 PRIOR DEED 1039 PG.712  
 SURVEYED BY: HAPONK & ASSOC.  
 C=1:333,333.

2/9/89  
 #18089

APPROVED  
 LORAIN CO.  
 MAP DEPT.

DATE 8-28-88

PAGE 5-00-056 F

BY *Paul Francis*

VOID AFTER # 18089