

-023
61.64 A.

-012
26.00A.

-013
28.00A.

-014
28.35A.

#15-0-0-0
Pt. 10-00-024-000-125-128
Pt. 66.83 A.
↑ 64.25 A

-015
13.21A.

9/12/88
#18088

APPROVED	
LORAIN CO.	
MAP DEPT.	
DATE	8-19-88
PAGE	10-13
BY	Carol Francis
VOID AFTER	# 18088

00-024-C

00-024-D

10-00-024-000

1216.90
461
455.20

3941.60

2695.5

2700

1244.80
1242.80

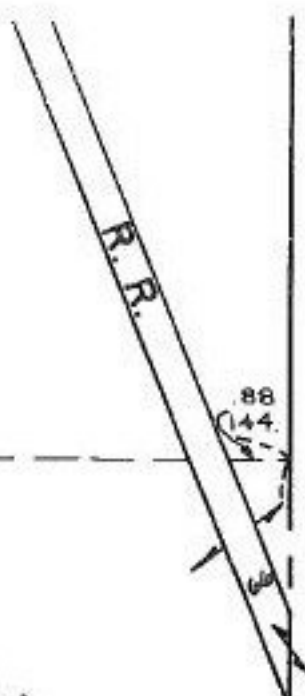
139
138

542.25

-016
1.59 A.
474.30

1017.20

454.70



144.88