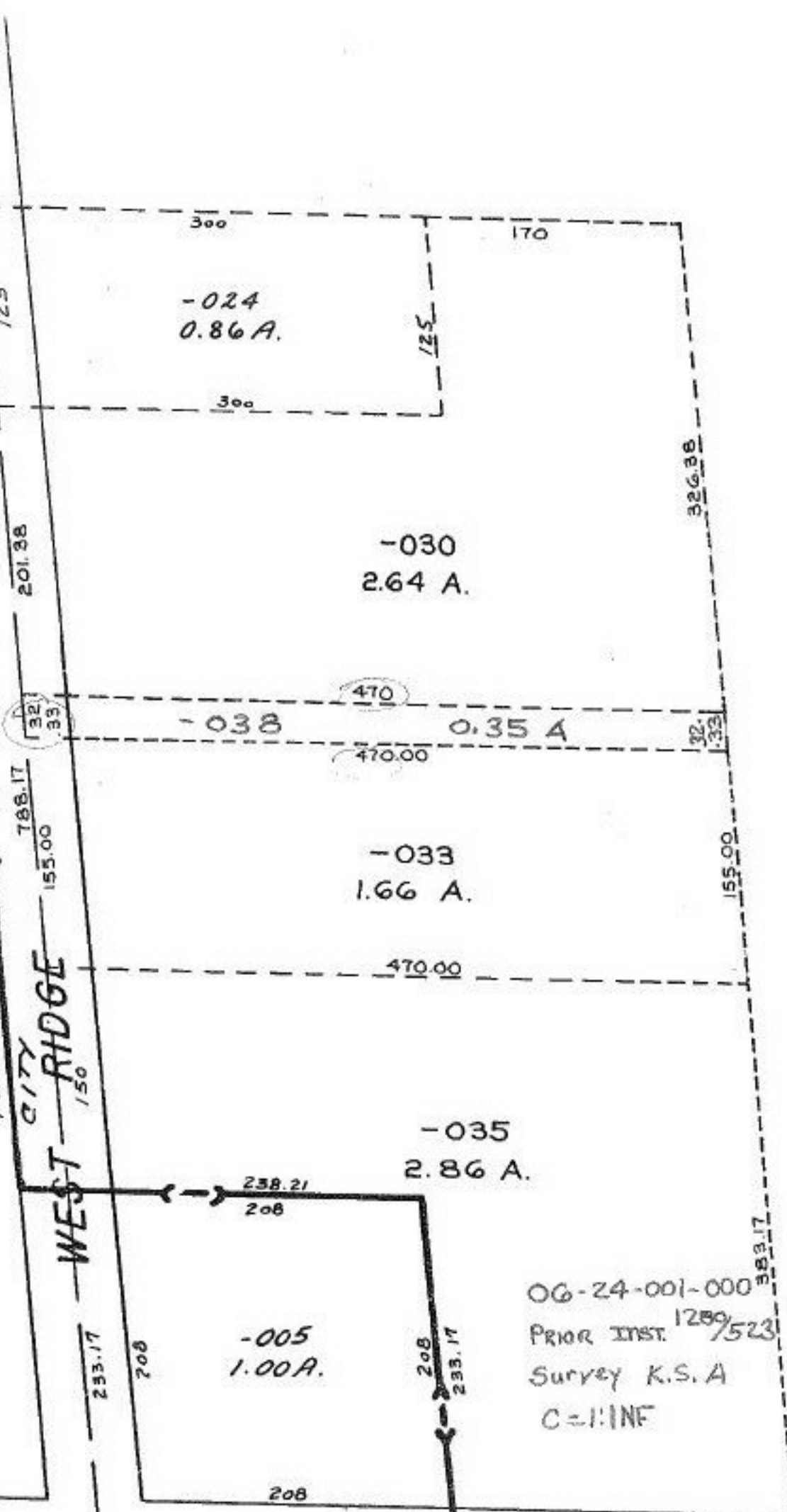


City of Elvira Corp. 822.12 TO 198.98
2697
125



-034
13.27 A

-039
12.92 A

9/9/88
#18045

APPROVED
LORAIN CO.
MAP DEPT.
DATE 7-23-33
PAGE 6-123
BY CAROL FRANKS
VOID AFTER # 18045

OG-24-001-000
Prior INST. 1280/523
Survey K.S.A
C=1:1NF