

60 W. RIVER

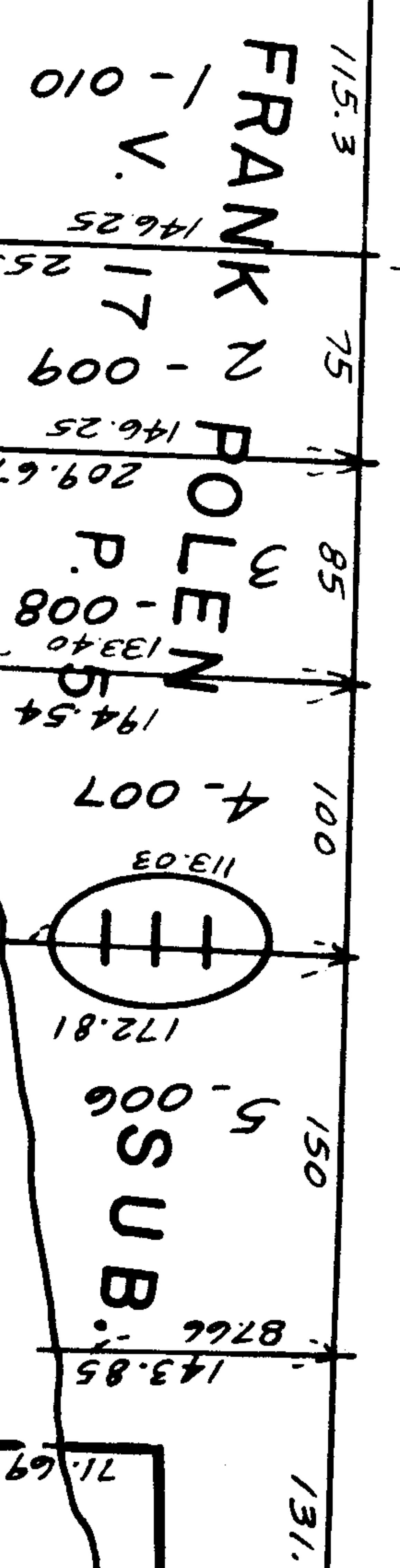
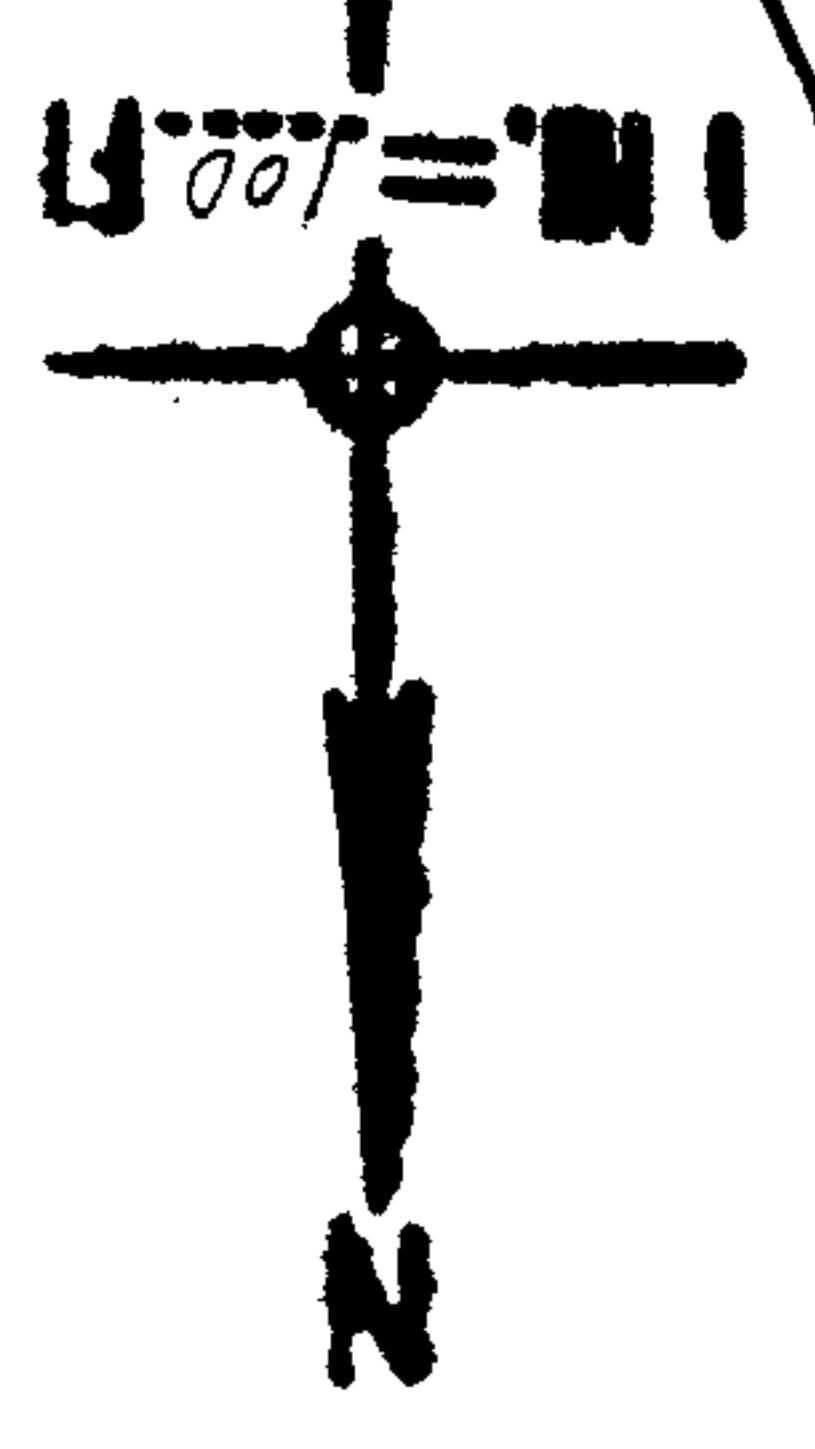
N. 3° 36' E 661.73

Pt. 10.00-003-101-006
Pt. 18.00F

300.01

APPROVED
LORAIN CO.
MAP DEPT.
DATE 5-25-68
10-00-003-13
BY *W. H. ...*

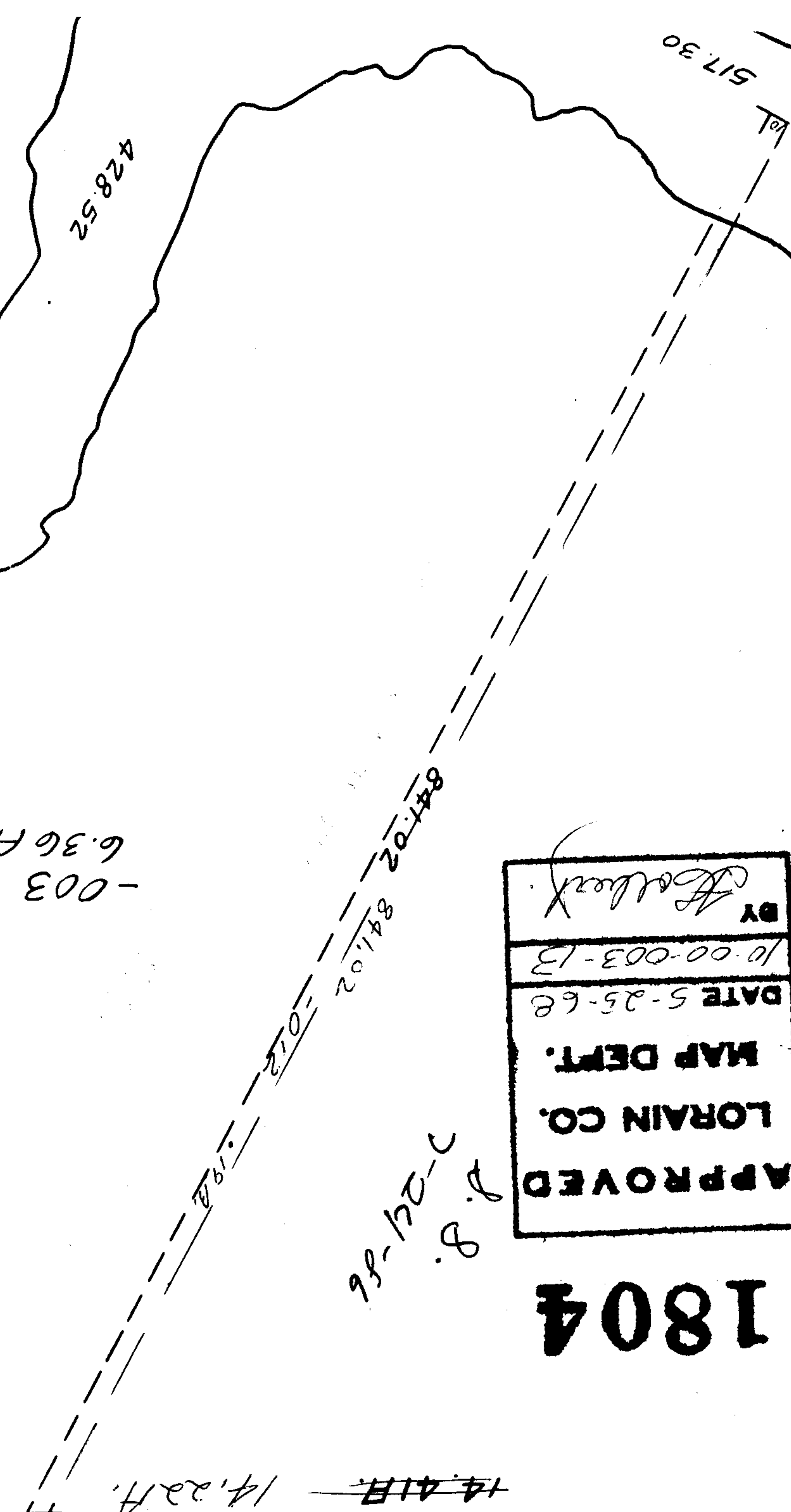
1804



115.3
146.25
253.02
146.25
209.67
133.40
194.54
113.03
172.81

114.54
N. 11° 27' 30" E
6.5L
86.02
20.98
2.101
N. 7° 23' 31" W.

190.79
237.83
93.28
N. 88° 21' W



-003
6.36A

112

11-30-87
Q

J. S.
2-29-86

14.41A
002

14.22A
-013

428.52

517.30

71.69

131.