

- 024
~~-001~~
~~20.37 A.~~
20.03 A.

COMBINATION

EN 10/6/88
#18002-A

APPROVED
LORAIN CO.
MAP DEPT.

DATE 6-23-88

PAGE 12-00-005-A

BY Carol Francis

VOID AFTER *18002-A

#17977

APPROVED
LORAIN CO.
MAP DEPT.

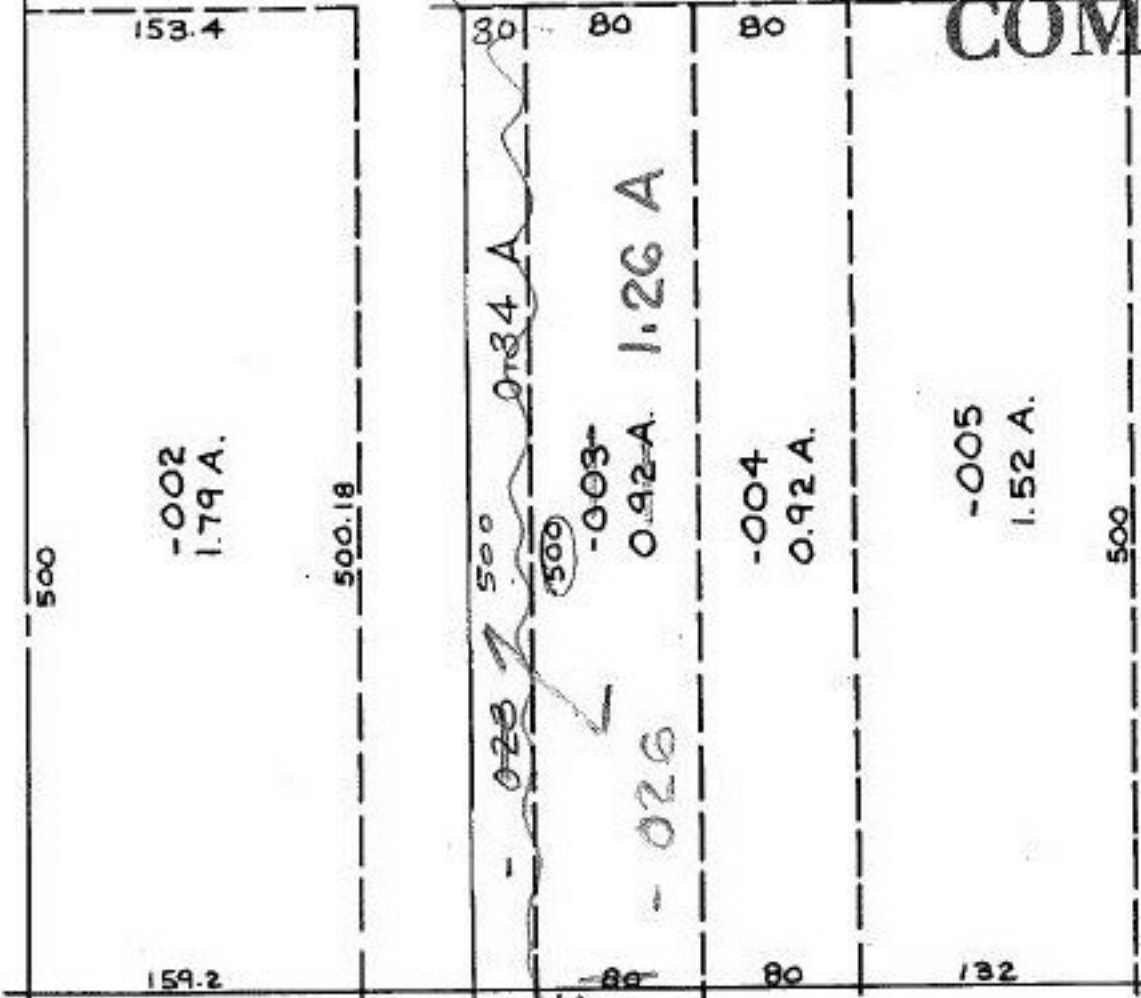
DATE 6-7-88

PAGE 12-00-005-A

BY Carol Francis

VOID AFTER 827-17977

SEE



ELYRIA - TWINSBURG

12/00-005-101 - PLNR D, 964-643
Survey by, John Hamilton 938-961
Rea. Surveyor C=LINE