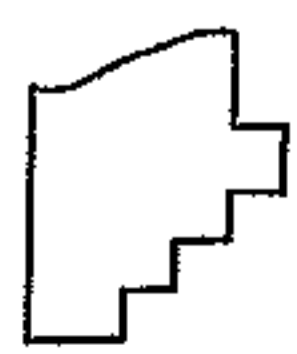
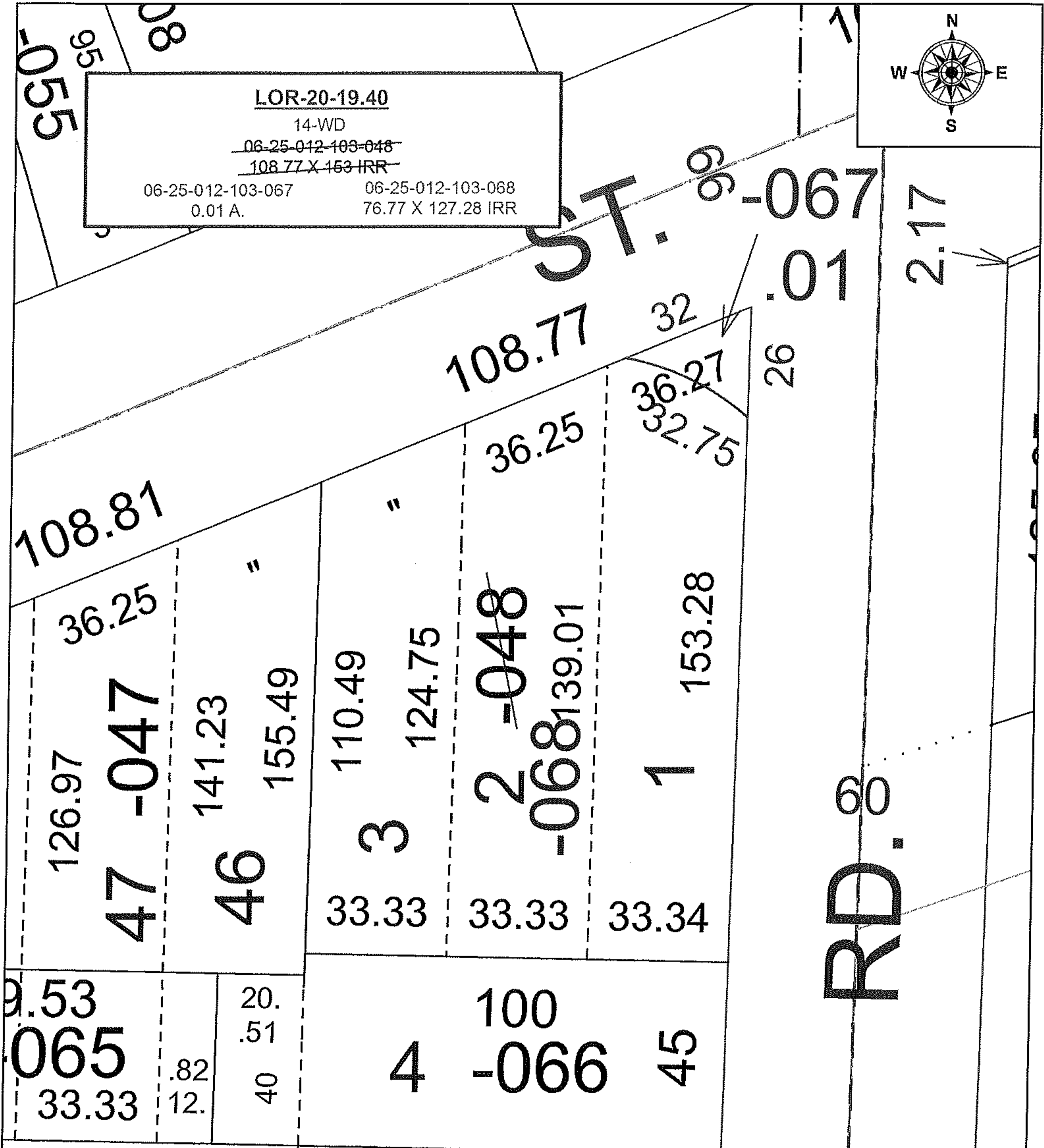


PARENT PARCEL: 06-25-012-103-048

CHILD PARCEL: 06-25-012-103-067, -068

STARTING POINT: INTERSECTION OF C/L OF CLEVELAND ST, AND C/L OF S.R.57

18-00761



**SPLITS/DEEDS PROCESSED**  
 LORAIN COUNTY TAX MAP DEPARTMENT  
 226 MIDDLE AVE. ELYRIA, OH

SURVEYED BY: BRIAN P. BINGHAM  
 CLOSURE: 1: 85,004  
 MAP PAGE(S): 6-106  
 APPROVED BY: RRM DATE: 3-26-18  
 SCALE: 1" = 30' PRIOR INSTRUMENT: 20090315542