

-065
7.97 A

1004.14

PRIOR DEED - OR 13/36'S

-212
23.34 A.

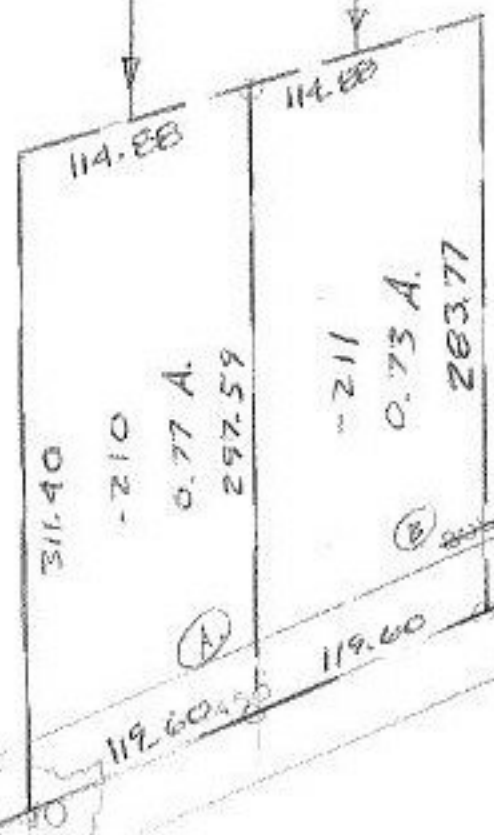
~~-084~~
~~24.84 A.~~

SURVEYED BY K.S. Assoc.
SEE MAP

(A)
CL. 1,111,111
(B)
CL. 1,200,000

1 36/889

32574



458.40

MIDDLE

946.3'

RDN
RDN
9/12/88
#17995

APPROVED
LORAIN CO.
MAP DEPT.

DATE 6-21-88

PAGE 10.00 013 P

BY T. McLean

VOID AFTER # 17995